

EIF3H polyclonal antibody

Catalog: BCP00702

Host: Rabbit

Reactivity: Human,Rat,Mouse

BackGround:

Component of the eukaryotic translation initiation factor 3 (eIF-3) complex, which is required for several steps in the initiation of protein synthesis. The eIF-3 complex associates with the 40S ribosome and facilitates the recruitment of eIF-1, eIF-1A, eIF-2:GTP:methionyl-tRNAⁱ and eIF-5 to form the 43S preinitiation complex (43S PIC). The eIF-3 complex stimulates mRNA recruitment to the 43S PIC and scanning of the mRNA for AUG recognition. The eIF-3 complex is also required for disassembly and recycling of post-termination ribosomal complexes and subsequently prevents premature joining of the 40S and 60S ribosomal subunits prior to initiation.

Product:

Rabbit IgG, 1mg/ml in PBS with 0.02% sodium azide, 50% glycerol, pH7.2

Molecular Weight:

~ 40 kDa

Swiss-Prot:

O15372

Purification&Purity:

The antibody was affinity-purified from rabbit antiserum by affinity-chromatography using epitope-specific immunogen and the purity is > 95% (by SDS-PAGE).

Applications:

WB 1:500 - 1:2000 IHC 1:50 - 1:200 IF 1:50 - 1:200

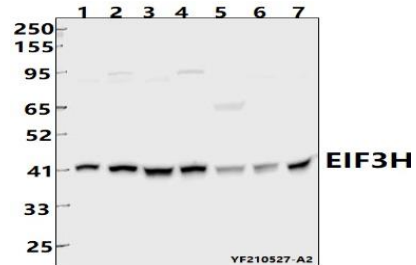
Storage&Stability:

Store at 4 °C short term. Aliquot and store at -20 °C long term. Avoid freeze-thaw cycles.

Specificity:

EIF3H polyclonal antibody detects endogenous levels of EIF3H protein.

DATA:



Western blot (WB) analysis of EIF3H polyclonal antibody at 1:5000 dilution

Lane1:EC9706 whole cell lysate(40ug)

Lane2:PC3 whole cell lysate(40ug)

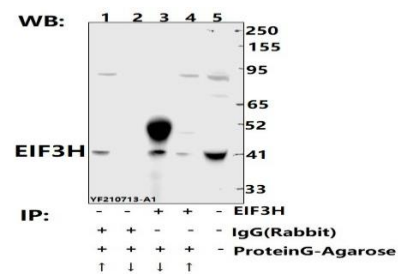
Lane3:Jurkat whole cell lysate(40ug)

Lane4:The Pancreas tissue lysate of Mouse(40ug)

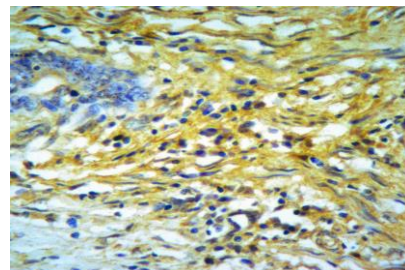
Lane5:The Thymus tissue lysate of Rat(40ug)

Lane6:The Testis tissue lysate of Mouse(40ug)

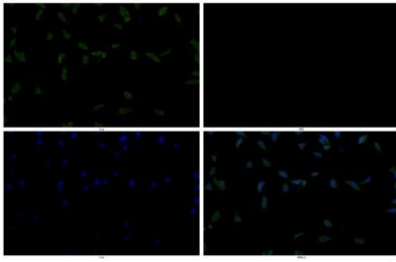
Lane7:The Brain tissue lysate of Rat(40ug)



Immunoprecipitation of Jurkat cell lysates using EIF3H pAb (Sepharose Bead Conjugate)#BD0048 (lane 3 and lane 4) and Nonspecific IgG Control (Sepharose Bead Conjugate)#BD0048 (lane 1 and lane 2) .Lane 5 is 30% input. The western blot was probed using EIF3H pAb.



Immunohistochemistry of paraffin-embedded Human Colorectal cancer using EIF3H antibody at dilution of 1:50.

**Note:**

For research use only, not for use in diagnostic procedure.

Immunofluorescence analysis of PC3 cells using EIF3H antibody at dilution of 1:50.