

EGFL4 (R1274) polyclonal antibody

Catalog: BCP00692

Host: Rabbit

Reactivity: Human,Mouse,Rat

BackGround:

EGFL4 (epidermal growth factor-like protein 4), also known as MEGF8 (multiple epidermal growth factor-like domains protein 8) or C19orf49, is a 2,845 amino acid single-pass type I membrane protein. EGFL4 contains 2 CUB domains, 5 EGF-like domains, 12 Kelch repeats, 4 laminin EGF-like domains and 7 PSI domains. Existing as two alternatively spliced isoforms, the gene encoding EGFL4 maps to human chromosome 19q13.2. Chromosome 19 consists of approximately 63 million bases, makes up over 2% of human genomic DNA, and is recognized for having the greatest gene density of the human chromosomes. It is the genetic home for a number of immunoglobulin superfamily members including the killer cell and leukocyte Ig-like receptors.

Product:

Rabbit IgG, 1mg/ml in PBS with 0.02% sodium azide, 50% glycerol, pH7.2

Molecular Weight:

~ 255 kDa

Swiss-Prot:

Q7Z7M0

Purification&Purity:

The antibody was affinity-purified from rabbit antiserum by affinity-chromatography using epitope-specific immunogen and the purity is > 95% (by SDS-PAGE).

Applications:

WB: 1:500~1:1000

IHC: 1:50~1:200

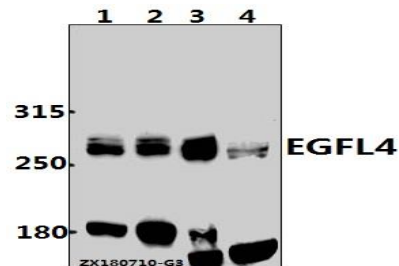
Storage&Stability:

Store at 4 °C short term. Aliquot and store at -20 °C long term. Avoid freeze-thaw cycles.

Specificity:

EGFL4 (R1274) polyclonal antibody detects endogenous levels of EGFL4 protein.

DATA:



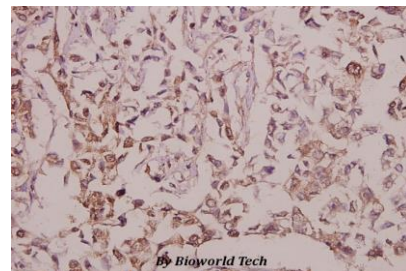
Western blot (WB) analysis of EGFL4 (R1274) pAb at 1:500 dilution

Lane1:L02 whole cell lysate(40ug)

Lane2:SGC7901 whole cell lysate(40ug)

Lane3:C6 whole cell lysate(40ug)

Lane4:AML-12 whole cell lysate(40ug)



Immunohistochemistry (IHC) analyzes of EGFL4 (R1274) pAb in paraffin-embedded human breast carcinoma tissue at 1:50.

Note:

For research use only, not for use in diagnostic procedure.