

## Eg5 (phospho-T926) polyclonal antibody

Catalog: BCP00691

Host: Rabbit

Reactivity: Human,Mouse,Rat

### BackGround:

Eg5 (also called kinesin-like protein 11 or Kif11) belongs to the kinesin-like family of motor proteins important in chromosome positioning, centrosome separation, and mitotic spindle formation. Phosphorylation of Eg5 by mitotic kinases regulates its activity by modulating its association with microtubules. Because anti-mitotic chemotherapeutic drugs, such as taxanes, target microtubules and have pleiotropic and sometimes toxic effects, drugs that target microtubule-associated proteins such as Eg5 are currently in development.

### Product:

Rabbit IgG, 1mg/ml in PBS with 0.02% sodium azide, 50% glycerol, pH7.2

### Molecular Weight:

~ 120 kDa

### Swiss-Prot:

P52732

### Purification&Purity:

The antibody was affinity-purified from rabbit antiserum by affinity-chromatography using epitope-specific immunogen and the purity is > 95% (by SDS-PAGE).

### Applications:

WB: 1:500~1:1000

### Storage&Stability:

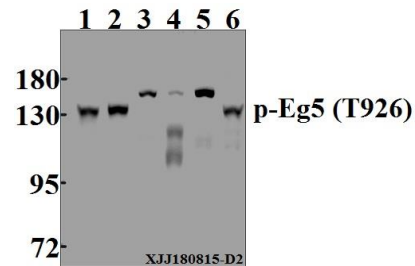
Store at 4 °C short term. Aliquot and store at -20 °C long term. Avoid freeze-thaw cycles.

### Specificity:

p-Eg5 (T926) pAb detects endogenous levels of Eg5 pro-

tein only when phosphorylated at Thr926.

### DATA:



Western blot (WB) analysis of p-Eg5 (T926) pAb at 1:500 dilution

Lane1:HCT116 whole cell lysate(40 µg)

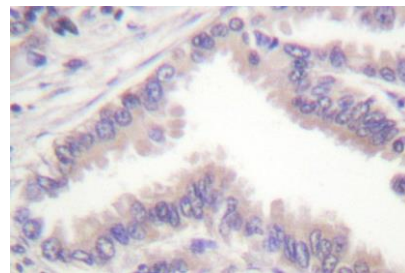
Lane2:HepG2 whole cell lysate(40 µg)

Lane3:CT-26 whole cell lysate(40 µg)

Lane4:C6 whole cell lysate(40 µg)

Lane5:LOVO whole cell lysate(40 µg)

Lane6:MCF-7 whole cell lysate(40 µg)



### Note:

For research use only, not for use in diagnostic procedure.