

EFP (D222) polyclonal antibody

Catalog: BCP00688

Host: Rabbit

Reactivity: Human

BackGround:

EFP (estrogen-responsive finger protein) is a transcription factor, the content of which is regulated by estrogen. It has been identified as a member of the RING finger family, a family of proteins containing a Zn²⁺ binding domain designated the C3HC4 or RING finger. EFP also contains two B box domains and a coiled-coil region (a transactivation domain), which are characteristic of a subgroup of the RING finger family. Estrogen regulates the growth, differentiation and function of target cells in a variety of tissues; however, few genes have been shown to be directly regulated by estrogen. It has been speculated that EFP may mediate estrogen activity in a signaling cascade in which estrogen-ER binding to the estrogen responsive element (ERE) downstream of the EFP gene upregulates EFP gene expression. The EFP gene product may then activate transcription of secondary estrogen responsive genes. Additional studies indicate that the EFP promoter may be regulated by multiple elements and their interacting factors.

Product:

Rabbit IgG, 1mg/ml in PBS with 0.02% sodium azide, 50% glycerol, pH7.2

Molecular Weight:

~ 71 kDa

Swiss-Prot:

Q14258

Purification&Purity:

The antibody was affinity-purified from rabbit antiserum by affinity-chromatography using epitope-specific im-

munogen and the purity is > 95% (by SDS-PAGE).

Applications:

WB: 1:500~1:1000

IHC: 1:50~1:200

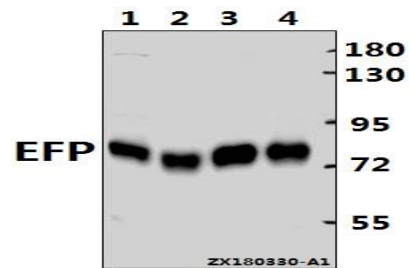
Storage&Stability:

Store at 4 °C short term. Aliquot and store at -20 °C long term. Avoid freeze-thaw cycles.

Specificity:

EFP (D222) polyclonal antibody detects endogenous levels of EFP protein.

DATA:



Western blot (WB) analysis of EFP (D222) pAb at 1:1000 dilution

Lane1:H1792 whole cell lysate(10ug)

Lane2:HepG2 whole cell lysate(10ug)

Lane3:MCF-7 whole cell lysate(10ug)

Lane4:L02 whole cell lysate(10ug)

Note:

For research use only, not for use in diagnostic procedure.