

**CYP17A1 (N249) polyclonal antibody**

Catalog: BCP00610

Host: Rabbit

Reactivity: Human

**BackGround:**

CYP17A1, also known as cytochrome P450C17, is a steroidogenic enzyme belonging to the P450 cytochrome superfamily of monooxygenases. In humans, CYP17A1 expression is abundantly expressed in the adrenal cortex, where it plays a central role in the androgen synthesis pathway (2). CYP17A1 is the primary target of abiraterone, a synthetic steroid used in the treatment of castration-resistant prostate cancer (CRPC). Abiraterone is converted to the more active form D4A, which antagonizes androgen receptor signaling by inhibiting CYP17A1 and other steroidogenic enzymes. This suppresses the synthesis of 5 $\alpha$ -dihydrotestosterone (DHT), which is a driver of castration-resistant prostate cancer cell growth.

**Product:**

Rabbit IgG, 1mg/ml in PBS with 0.02% sodium azide, 50% glycerol, pH7.2.

**Molecular Weight:**

~ 60 kDa

**Swiss-Prot:**

P05093

**Purification&Purity:**

The antibody was affinity-purified from rabbit antiserum by affinity-chromatography using epitope-specific immunogen and the purity is > 95% (by SDS-PAGE).

**Applications:**

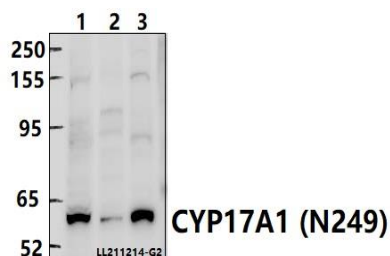
WB: 1:2000~1:5000

**Storage&Stability:**

Store at 4 °C short term. Aliquot and store at -20 °C long term. Avoid freeze-thaw cycles.

**Specificity:**

CYP17A1 (N249) polyclonal antibody detects endogenous levels of CYP17A1 protein.

**DATA:**

Western blot (WB) analysis of CYP17A1 (N249) polyclonal antibody at 1:2000 dilution

Lane1:HEK293T whole cell lysate(40ug)

Lane2:A549 whole cell lysate(40ug)

Lane3:K562 whole cell lysate(40ug)

**Note:**

For research use only, not for use in diagnostic procedure.