

c-Src (phospho-Y529) polyclonal antibody

Catalog: BCP00586

Host: Rabbit

Reactivity: Human, Mouse, Rat

Background:

The major translational products of each of the eight members of the Src gene family identified to date are membrane-associated tyrosine protein kinases that lack transmembrane and external amino acid sequences, thereby distinguishing this group from the receptor class of tyrosine kinases. Members of this group include c-Src, c-Yes, Fyn, Lck, Lyn, Blk and c-Fgr. The major Src gene encoded protein, c-Src (also designated pp60Src, Src p60 and proto-oncogene tyrosine protein kinase Src) is expressed in a broad range of tissue and cell types, although the highest levels of c-Src are detected in neuronal tissues and platelets. c-Src may play a role in events associated with both neuronal differentiation and maintenance of mature neuronal cell functions.

Product:

Rabbit IgG, 1mg/ml in PBS with 0.02% sodium azide, 50% glycerol, pH7.2

Molecular Weight:

~ 60 kDa

Swiss-Prot:

P12931

Purification&Purity:

The antibody was affinity-purified from rabbit antiserum by affinity-chromatography using epitope-specific immunogen and the purity is > 95% (by SDS-PAGE).

Applications:

WB: 1:500~1:1000

IHC: 1:50~1:200

Storage&Stability:

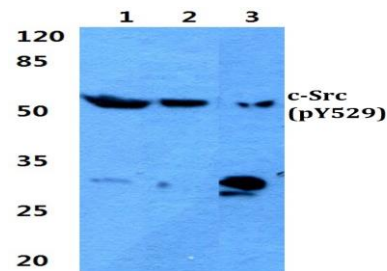
Store at 4 °C short term. Aliquot and store at -20 °C long

term. Avoid freeze-thaw cycles.

Specificity:

p-c-Src (Y529) polyclonal antibody detects endogenous levels of c-Src protein only when phosphorylated at Tyr529.

DATA:

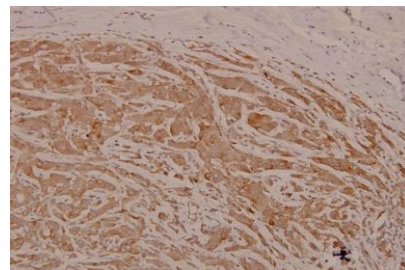


Western blot (WB) analysis of p-c-Src (Y529) pAb at 1:500 dilution

Lane1:A375 whole cell lysate(20ug)

Lane2:The Uterus tissue lysate of Mouse(20ug)

Lane3:The Uterus tissue lysate of Rat(20ug)



Immunohistochemistry (IHC) analyzes of p-c-Src (Y529) pAb in paraffin-embedded human breast carcinoma tissue at 1:100.

Note:

For research use only, not for use in diagnostic procedure.