

c-Src (phospho-S75) polyclonal antibody

Catalog: BCP00585

Host: Rabbit

Reactivity: Human,Mouse,Rat

BackGround:

The major translational products of each of the eight members of the Src gene family identified to date are membrane-associated tyrosine protein kinases that lack transmembrane and external amino acid sequences, thereby distinguishing this group from the receptor class of tyrosine kinases. Members of this group include c-Src, c-Yes, Fyn, Lck, Lyn, Blk and c-Fgr. The major Src gene encoded protein, c-Src (also designated pp60Src, Src p60 and proto-oncogene tyrosine protein kinase Src) is expressed in a broad range of tissue and cell types, although the highest levels of c-Src are detected in neuronal tissues and platelets. c-Src may play a role in events associated with both neuronal differentiation and maintenance of mature neuronal cell functions.

Product:

Rabbit IgG, 1mg/ml in PBS with 0.02% sodium azide, 50% glycerol, pH7.2

Molecular Weight:

~ 60 kDa

Swiss-Prot:

P12931

Purification&Purity:

The antibody was affinity-purified from rabbit antiserum by affinity-chromatography using epitope-specific immunogen and the purity is > 95% (by SDS-PAGE).

Applications:

WB: 1:500~1:1000

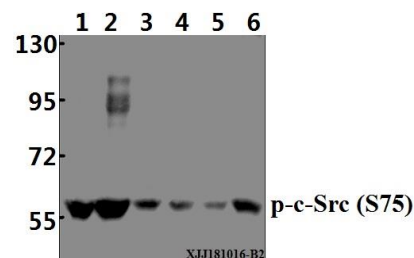
Storage&Stability:

Store at 4 °C short term. Aliquot and store at -20 °C long term. Avoid freeze-thaw cycles.

Specificity:

p-Src (S75) polyclonal antibody detects endogenous levels of Src protein when phosphorylated at Ser75.

DATA:



Western blot (WB) analysis of p-c-Src (S75) pAb at 1:500 dilution

Lane1:Beas-2B whole cell lysate(40 µg)

Lane2:HEK293T whole cell lysate(40 µg)

Lane3:SK-OVCAR3 whole cell lysate(40 µg)

Lane4:A549 whole cell lysate(40 µg)

Lane5:MCF-7 whole cell lysate(40 µg)

Lane6:H9C2 whole cell lysate(40 µg)

Note:

For research use only, not for use in diagnostic procedure.