

CRSP70 (S7) polyclonal antibody

Catalog: BCP00578

Host: Rabbit

Reactivity: Human,Mouse,Rat

BackGround:

These complexes include CRSP (for cofactor required for Sp1 activation), which is required, in conjunction with TAFII, for transcriptional activation by Sp1. CRSP is ubiquitously expressed in various tissues and functions as a multimeric complex that consists of nine distinct subunits. Several members of the CRSP family share sequence similarity with multiple components of the yeast transcriptional mediator proteins, including CRSP150, which is related to yeast Rgr1, and CRSP70, which is similar to the elongation factor TFIIS. CRSP77 and CRSP150 are also related to proteins within the putative murine mediator complex, while CRSP130 and CRSP34 are largely unrelated to either murine or yeast proteins.

Product:

Rabbit IgG, 1mg/ml in PBS with 0.02% sodium azide, 50% glycerol, pH7.2

Molecular Weight:

~ 65 kDa

Swiss-Prot:

O95402

Purification&Purity:

The antibody was affinity-purified from rabbit antiserum by affinity-chromatography using epitope-specific immunogen and the purity is > 95% (by SDS-PAGE).

Applications:

WB: 1:500~1:1000

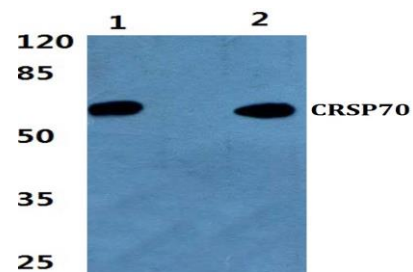
Storage&Stability:

Store at 4 °C short term. Aliquot and store at -20 °C long term. Avoid freeze-thaw cycles.

Specificity:

CRSP70 (S7) polyclonal antibody detects endogenous levels of CRSP70 protein.

DATA:



Western blot (WB) analysis of CRSP70 (S7) pAb at 1:500 dilution

Lane1:HEK293T whole cell lysate(40ug)

Lane2:PC3 whole cell lysate(40ug)

Lane3:K562 whole cell lysate(40ug)

Lane4:The Brain tissue lysate of Rat(40ug)

Lane5:The Kidney tissue lysate of Mouse(40ug)

Note:

For research use only, not for use in diagnostic procedure.