

CREG1 polyclonal antibody

Catalog: BCP00569

Host: Rabbit

Reactivity: Rat, Mouse

Background:

May contribute to the transcriptional control of cell growth and differentiation. Antagonizes transcriptional activation and cellular transformation by the adenovirus E1A protein. The transcriptional control activity of cell growth requires interaction with IGF2R.

Product:

Rabbit IgG, 1mg/ml in PBS with 0.02% sodium azide, 50% glycerol, pH7.2.

Molecular Weight:

~ 30 kDa

Swiss-Prot:

O75629

Purification&Purity:

The antibody was affinity-purified from rabbit antiserum by affinity-chromatography using epitope-specific immunogen and the purity is > 95% (by SDS-PAGE).

Applications:

WB: 1:1000~1:2000

Storage&Stability:

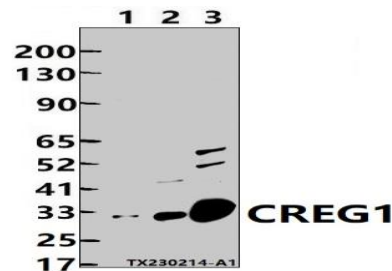
Store at 4 °C short term. Aliquot and store at -20 °C long

term. Avoid freeze-thaw cycles.

Specificity:

CREG1 polyclonal antibody detects endogenous levels of CREG1 protein.

DATA:



Western blot (WB) analysis of CREG1 polyclonal antibody at 1:1000 dilution

Lane1:PC12 whole cell lysate(30ug)

Lane2:The Kidney tissue lysate of Mouse(30ug)

Lane3:The Kidney tissue lysate of Rat(30ug)

Note:

For research use only, not for use in diagnostic procedure.