

Connexin 43 (R361) polyclonal antibody

Catalog: BCP00547

Host: Rabbit

Reactivity: Human, Mouse, Rat

BackGround:

Connexin 43 (Cx43) is a member of the large family of gap junction proteins. Connexins assemble as a hexamer and are transported to the plasma membrane to create a hemichannel that can associate with hemichannels on nearby cells to create cell-to-cell channels. Clusters of these channels assemble to make gap junctions. Gap junction communication is important in development and regulation of cell growth. Phosphorylation of Cx43 is important in regulating assembly and function of gap junctions. Ser368 of Cx43 is phosphorylated by protein kinase C (PKC) after activation by phorbol esters, which decreases cell-to-cell communication. Src can interact with and phosphorylate Cx43 to alter gap junction communication.

Product:

Rabbit IgG, 1mg/ml in PBS with 0.02% sodium azide, 50% glycerol, pH7.2

Molecular Weight:

~ 43 kDa

Swiss-Prot:

P17302

Purification&Purity:

The antibody was affinity-purified from rabbit antiserum by affinity-chromatography using epitope-specific immunogen and the purity is > 95% (by SDS-PAGE).

Applications:

WB: 1:500~1:1000

IHC: 1:50~1:200

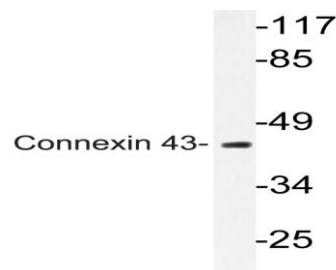
Storage&Stability:

Store at 4 °C short term. Aliquot and store at -20 °C long term. Avoid freeze-thaw cycles.

Specificity:

Connexin 43 (R361) polyclonal antibody detects endogenous levels of Connexin 43 protein.

DATA:



Western blot (WB) analysis of Connexin 43 (R361) pAb at 1:1000 dilution

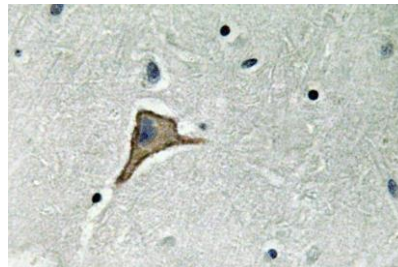
Lane1:HEK293T whole cell lysate(40ug)

Lane2:A549 whole cell lysate(40ug)

Lane3:PC3 whole cell lysate(40ug)

Lane4:The Testis tissue lysate of Rat(40ug)

Lane5:The Brain tissue lysate of Mouse(20ug)



Immunohistochemistry (IHC) analyzes of Connexin 43 (R361) pAb in paraffin-embedded human brain tissue.

Note:

For research use only, not for use in diagnostic procedure.