

CD34 (L257) polyclonal antibody

Catalog: BCP00433

Host: Rabbit

Reactivity: Human,Mouse,Rat

BackGround:

CD34 is a heavily glycosylated, transmembrane glycoprotein that is expressed on the surface of lymphohematopoietic stem and progenitor cells, small-vessel endothelial cells, embryonic fibroblasts and some cells in fetal and adult nervous tissue. CD34 antigen expression is highest in the most primitive stem cells and is gradually lost as lineage committed progenitors differentiate. The CD34 antigen is also present on capillary endothelial cells and on bone marrow stromal cells. The CD34 cytoplasmic domain has an intracellular domain that contains consensus sites for activated protein kinase C (PKC) phosphorylation as well as serine, threonine and tyrosine phosphorylation consensus sites.

Product:

Rabbit IgG, 1mg/ml in PBS with 0.02% sodium azide, 50% glycerol, pH7.2

Molecular Weight:

~ 41 kDa

Swiss-Prot:

P28906

Purification&Purity:

The antibody was affinity-purified from rabbit antiserum by affinity-chromatography using epitope-specific immunogen and the purity is > 95% (by SDS-PAGE).

Applications:

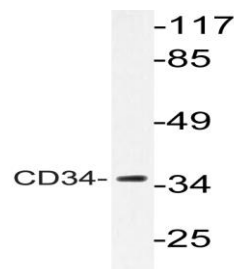
WB: 1:500~1:2000

Storage&Stability:

Store at 4 °C short term. Aliquot and store at -20 °C long term. Avoid freeze-thaw cycles.

Specificity:

CD34 (L257) polyclonal antibody detects endogenous levels of CD34 protein.

DATA:

Western blot (WB) analysis of CD34 (L257) pAb at 1:2000 dilution

Lane1:The Kidney tissue lysate of Mouse(40ug)

Lane2:The Kidney tissue lysate of Rat(40ug)

Lane3:HEK293T whole cell lysate(40ug)

Lane4:HepG2 whole cell lysate(40ug)

Note:

For research use only, not for use in diagnostic procedure.