

**CD32-A (D280) polyclonal antibody**

Catalog: BCP00431

Host: Rabbit

Reactivity: Human,Mouse,Rat

**BackGround:**

CD32 (also designated Fc gamma RII) is a low affinity receptor for the Fc fragment of aggregated IgG. CD32 is responsible for the clearance of immunocomplexes by macrophages and also plays an important role in the regulation of antibody production by B cells. IgG can non-cooperatively bind either one or two highly glycosylated CD32 molecules, and this binding delivers a negative signal for B cells. CD32 exists as several isoforms that are produced by alternative splicing of three distinct genes, A, B, and C. These isoforms are designated FcγRIIA, FcγRIIB1, FcγRIIB3, and FcγRIIC. All isoforms are present on monocytes, placental trophoblasts and endothelial cells. In addition, the FcγRIIB forms are present on B lymphocytes, and the FcγRIIA and FcγRIIC forms are found on neutrophils.

**Product:**

Rabbit IgG, 1mg/ml in PBS with 0.02% sodium azide, 50% glycerol, pH7.2

**Molecular Weight:**

~ 35 kDa

**Swiss-Prot:**

P12318

**Purification&Purity:**

The antibody was affinity-purified from rabbit antiserum by affinity-chromatography using epitope-specific immunogen and the purity is > 95% (by SDS-PAGE).

**Applications:**

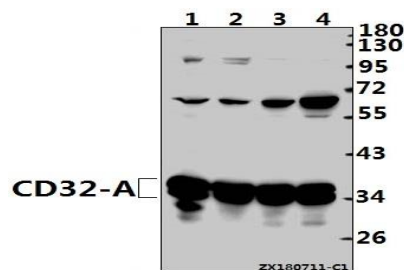
WB: 1:500~1:1000

**Storage&Stability:**

Store at 4 °C short term. Aliquot and store at -20 °C long term. Avoid freeze-thaw cycles.

**Specificity:**

CD32-A (D280) polyclonal antibody detects endogenous levels of CD32-A protein.

**DATA:**

Western blot (WB) analysis of CD32-A (D280) pAb at 1:500 dilution

Lane1:3T3-L1 whole cell lysate(40ug)

Lane2:PMVEC whole cell lysate(40ug)

Lane3:A549 whole cell lysate(20ug)

Lane4:K562 whole cell lysate(20ug)

**Note:**

For research use only, not for use in diagnostic procedure.