

CD30 (H559) polyclonal antibody

Catalog: BCP00421

Host: Rabbit

Reactivity: Human, Mouse, Rat

BackGround:

The tumor necrosis factor (TNF) receptor family is composed of several type I integral membrane glycoproteins that exhibit homology in their cysteine-rich extracellular domains. Members of this family include FAS, OX40, CD27 and CD30. CD30 is a surface marker for neoplastic cells of the Hodgkin's lymphoma and related hematologic malignancies.

Product:

Rabbit IgG, 1mg/ml in PBS with 0.02% sodium azide, 50% glycerol, pH7.2

Molecular Weight:

~ 120 kDa

Swiss-Prot:

P28908

Purification&Purity:

The antibody was affinity-purified from rabbit antiserum by affinity-chromatography using epitope-specific immunogen and the purity is > 96% (by SDS-PAGE).

Applications:

WB 1:500 - 1:1000

IHC 1:50 - 1:100

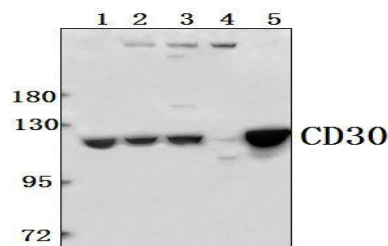
IP 1:10 - 1:100

Storage&Stability:

Store at 4 °C short term. Aliquot and store at -20 °C long term. Avoid freeze-thaw cycles.

Specificity:

CD30 (H559) polyclonal antibody detects endogenous levels of CD30 protein.

DATA:

Western blot (WB) analysis of CD30 (H559) polyclonal antibody at 1:1000 dilution

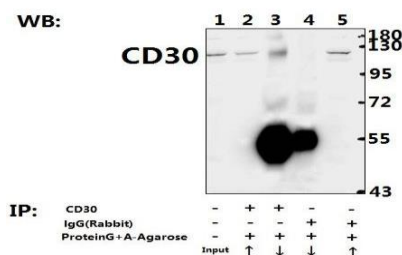
Lane1:HCT116 whole cell lysate(40ug)

Lane2:MCF-7 whole cell lysate(40ug)

Lane3:CT26 whole cell lysate(40ug)

Lane4:PC12 whole cell lysate(40ug)

Lane5:The Testis tissue lysate of Rat(40ug)



Immunoprecipitation of the Testis tissue lysate of Rat using CD30 (H559) pAb (Sephacrose Bead Conjugate) #BD0048(lane 2 and lane 3) and Nonspecific IgG Control (Sephacrose Bead Conjugate)#BD0048 (lane 4 and lane 5) .Lane 1 is 30% input. The western blot was probed using CD30 (H559) pAb. "↑" (supernatant); "↓" (deposition)

Note:

For research use only, not for use in diagnostic procedure.