

CD156a polyclonal antibody

Catalog: BCP00394

Host: Rabbit

Reactivity: Human,Rat,Mouse

BackGround:

Possible involvement in extravasation of leukocytes.

Product:

Rabbit IgG, 1mg/ml in PBS with 0.02% sodium azide, 50% glycerol, pH7.2.

Molecular Weight:

~ 90 kDa

Swiss-Prot:

P78325

Purification&Purity:

The antibody was affinity-purified from rabbit antiserum by affinity-chromatography using epitope-specific immunogen and the purity is > 95% (by SDS-PAGE).

Applications:

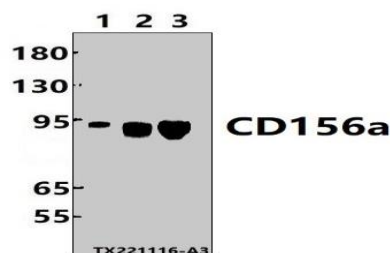
WB: 1:1000~1:2000

Storage&Stability:

Store at 4 °C short term. Aliquot and store at -20 °C long term. Avoid freeze-thaw cycles.

Specificity:

CD156a polyclonal antibody detects endogenous levels of CD156a protein.

DATA:

Western blot (WB) analysis of CD156a polyclonal antibody at 1:1000 dilution

Lane1:Hela whole cell lysate(30ug)

Lane2:RAW264.7 whole cell lysate(30ug)

Lane3:C6 whole cell lysate(30ug)

Note:

For research use only, not for use in diagnostic procedure.