

CD147 polyclonal antibody

Catalog: BCP00391

Host: Rabbit

Reactivity: Human

BackGround:

Basigin (EMMPRIN, CD147) is a type I integral membrane receptor protein belonging to the immunoglobulin superfamily. Basigin is a glycosylated protein with four known isoforms, of which isoform 2 is the most abundantly expressed. Multiple functions have been ascribed to Basigin; foremost among these is stimulating the secretion of extracellular matrix metalloproteinases by adjacent fibroblasts, a function which has been implicated in promoting tumor progression. Research studies have shown that Basigin is overexpressed by many tumor cells, and its expression level may correlate with tumor malignancy. A recent study identified the BASIGIN gene as a regulatory target of Slug, suggesting a role for Basigin in the process of epithelial-mesenchymal transition. Basigin has also been identified as a marker for a subset of highly suppressive regulatory T cells, and as an obligate receptor for the malarial parasite *Plasmodium falciparum* on human erythrocytes.

Product:

Rabbit IgG, 1mg/ml in PBS with 0.02% sodium azide, 50% glycerol, pH7.2.

Molecular Weight:

~ 42 kDa

Swiss-Prot:

P35613

Purification&Purity:

The antibody was affinity-purified from rabbit antiserum by affinity-chromatography using epitope-specific immunogen and the purity is > 95% (by SDS-PAGE).

Applications:

WB: 1:2000~1:5000

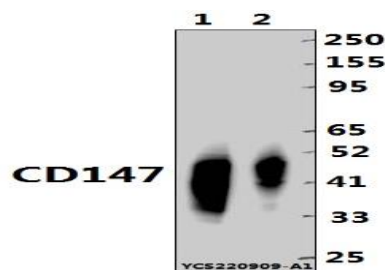
IP 1:50 - 1:200

Storage&Stability:

Store at 4 °C short term. Aliquot and store at -20 °C long term. Avoid freeze-thaw cycles.

Specificity:

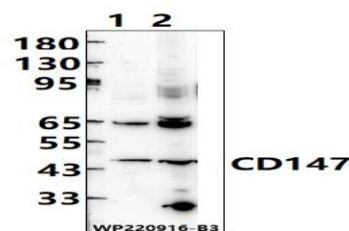
CD147 polyclonal antibody detects endogenous levels of CD147 protein.

DATA:

Western blot (WB) analysis of CD147 polyclonal antibody at 1:5000 dilution

Lane1:A375 cell membrane lysate(10ug)

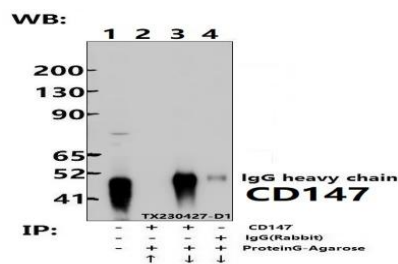
Lane2:SK-OVCAR3 cell membrane lysate(4ug)



Western blot (WB) analysis of CD147 polyclonal antibody at 1:2000 dilution

Lane1:EC9706 cell membrane lysate(25ug)

Lane2:A549 cell membrane lysate(25ug)



Immunoprecipitation of SK-OVCAR3 cell lysates using CD147 pAb (Sephacrose Bead Conjugate) #BD0048 (lane 2 and lane 3) and Nonspecific IgG Control (Sephacrose Bead Conjugate) #BD0048 (lane 4). Lane 1 is 30% input. The western blot was probed using CD147 pAb.

Note:

For research use only, not for use in diagnostic procedure.

