

CD144 polyclonal antibody

Catalog: BCP00389

Host: Rabbit

Reactivity: Human

BackGround:

Cadherins are a superfamily of transmembrane glycoproteins that contain cadherin repeats of approximately 100 residues in their extracellular domain. Cadherins mediate calcium-dependent cell-cell adhesion and play critical roles in normal tissue development. The classic cadherin subfamily includes N-, P-, R-, B-, and E-cadherins, as well as about ten other members that are found in adherens junctions, a cellular structure near the apical surface of polarized epithelial cells. The cytoplasmic domain of classical cadherins interacts with β -catenin, γ -catenin (also called plakoglobin), and p120 catenin. β -catenin and γ -catenin associate with α -catenin, which links the cadherin-catenin complex to the actin cytoskeleton. While β - and γ -catenin play structural roles in the junctional complex, p120 regulates cadherin adhesive activity and trafficking. Investigators consider E-cadherin an active suppressor of invasion and growth of many epithelial cancers. Research studies indicate that cancer cells have up-regulated N-cadherin in addition to loss of E-cadherin. This change in cadherin expression is called the "cadherin switch." N-cadherin cooperates with the FGF receptor, leading to overexpression of MMP-9 and cellular invasion. Research studies have shown that in endothelial cells, VE-cadherin signaling, expression, and localization correlate with vascular permeability and tumor angiogenesis. Investigators have also demonstrated that expression of P-cadherin, which is normally present in epithelial cells, is also altered in ovarian and other human cancers.

Product:

Rabbit IgG, 1mg/ml in PBS with 0.02% sodium azide, 50% glycerol, pH7.2.

Molecular Weight:

~120 kDa

Swiss-Prot:

P33151

Purification&Purity:

The antibody was affinity-purified from rabbit antiserum by affinity-chromatography using epitope-specific im-

munogen and the purity is > 95% (by SDS-PAGE).

Applications:

WB: 1:1000~1:2000

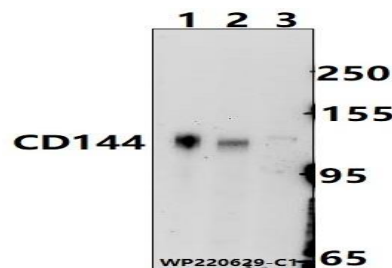
IP 1:50 - 1:200

Storage&Stability:

Store at 4 °C short term. Aliquot and store at -20 °C long term. Avoid freeze-thaw cycles.

Specificity:

CD144 polyclonal antibody detects endogenous levels of CD144 protein.

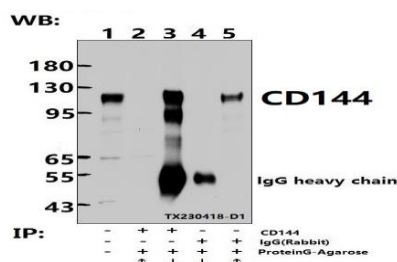
DATA:

Western blot (WB) analysis of CD144 polyclonal antibody at 1:1000 dilution

Lane1:SGC7901 whole cell lysate(3ug)

Lane2:HEPG2 whole cell lysate(30ug)

Lane3:HEK293T whole cell lysate(30ug)



Immunoprecipitation of HepG2 cell lysates using CD144 pAb (Sepharose Bead Conjugate)#BD0048 (lane 2 and lane 3) and Nonspecific IgG Control (Sepharose Bead Conjugate)#BD0048 (lane 4 and lane 5). Lane 1 is 30% input. The western blot was probed using CD144 pAb.

Note:

For research use only, not for use in diagnostic procedure.