

CD14 polyclonal antibody

Catalog: BCP00387

Host: Rabbit

Reactivity: Human

BackGround:

Coreceptor for bacterial lipopolysaccharide. In concert with LBP, binds to monomeric lipopolysaccharide and delivers it to the LY96/TLR4 complex, thereby mediating the innate immune response to bacterial lipopolysaccharide (LPS). Acts via MyD88, TIRAP and TRAF6, leading to NF-kappa-B activation, cytokine secretion and the inflammatory response.

Acts as a coreceptor for TLR2:TLR6 heterodimer in response to diacylated lipopeptides and for TLR2:TLR1 heterodimer in response to triacylated lipopeptides, these clusters trigger signaling from the cell surface and subsequently are targeted to the Golgi in a lipid-raft dependent pathway. Binds electronegative LDL (LDL-) and mediates the cytokine release induced by LDL-.

Product:

Rabbit IgG, 1mg/ml in PBS with 0.02% sodium azide, 50% glycerol, pH7.2.

Molecular Weight:

~45 kDa

Swiss-Prot:

P08571

Purification&Purity:

The antibody was affinity-purified from rabbit antiserum by affinity-chromatography using epitope-specific immunogen and the purity is > 95% (by SDS-PAGE).

Applications:

WB: 1:5000~1:10000

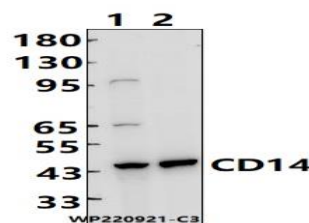
Storage&Stability:

Store at 4 °C short term. Aliquot and store at -20 °C long term. Avoid freeze-thaw cycles.

Specificity:

CD14 polyclonal antibody detects endogenous levels of CD14 protein.

DATA:



Western blot (WB) analysis of CD14 polyclonal antibody at 1:5000 dilution

Lane1:MCF-7 cell membrane lysate(25ug)

Lane2:A549 cell membrane lysate(25ug)

Note:

For research use only, not for use in diagnostic procedure.