

CD123 (Q192) polyclonal antibody

Catalog: BCP00378

Host: Rabbit

Reactivity: Human

BackGround:

Interleukin-3, or IL-3, is a pleiotropic cytokine that is primarily secreted by activated T lymphocytes and stimulates the proliferation and differentiation of hematopoietic cells. IL-3 exerts its biological effects through a receptor which consists of a ligand-specific α subunit (IL-3R α) and a signal transducing β subunit (IL-3R β) common to the IL-3/IL-5/GM-CSF receptors. The α subunits are low-affinity ligand-binding proteins while the β subunits do not themselves bind ligand, but are required for high affinity binding by the α subunits. The mouse IL-3 receptor has two distinct β subunits, one that functions only in IL-3-mediated cell signaling and a second that is shared with IL-5 and GM-CSF. The murine β subunits are 91% homologous at the amino acid level but only 56% homologous to the human β subunit. The carboxy-terminus of the β subunit has been shown to be necessary for activation of the MAP kinase signaling pathway. Although the IL-3 receptor has no intrinsic kinase activity, stimulation with IL-3 leads to tyrosine phosphorylation of the JAK/Tyk 2 family member, JAK2, which in turn activates and causes nuclear translocation of Stat5a and Stat5b.

Product:

Rabbit IgG, 1mg/ml in PBS with 0.02% sodium azide, 50% glycerol, pH7.2

Molecular Weight:

~ 43 kDa

Swiss-Prot:

P26951

Purification&Purity:

The antibody was affinity-purified from rabbit antiserum by affinity-chromatography using epitope-specific immunogen and the purity is > 96% (by SDS-PAGE).

Applications:

WB: 1:500~1:1000

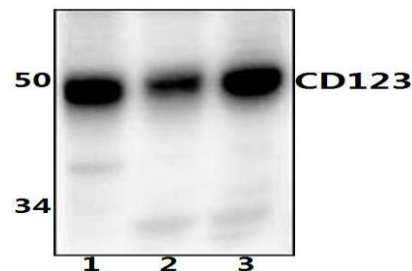
Storage&Stability:

Store at 4 °C short term. Aliquot and store at -20 °C long term. Avoid freeze-thaw cycles.

Specificity:

CD123 (Q192) polyclonal antibody detects endogenous levels of CD123 protein.

DATA:



Western blot (WB) analysis of CD123 (Q192) polyclonal antibody at 1:1000 dilution

Lane1:MCF-7 whole cell lysate(20ug)

Lane2:THP-1 whole cell lysate(20ug)

Lane3:Jurkat whole cell lysate(20ug)

Note:

For research use only, not for use in diagnostic procedure.