

CD116/CSF2RA polyclonal antibody

Catalog: BCP00373

Host: Rabbit

Reactivity: Human

BackGround:

Low affinity receptor for granulocyte-macrophage colony-stimulating factor. Transduces a signal that results in the proliferation, differentiation, and functional activation of hematopoietic cells.

Product:

Rabbit IgG, 1mg/ml in PBS with 0.02% sodium azide, 50% glycerol, pH7.2.

Molecular Weight:

~ 46 kDa

Swiss-Prot:

P15509

Purification&Purity:

The antibody was affinity-purified from rabbit antiserum by affinity-chromatography using epitope-specific immunogen and the purity is > 95% (by SDS-PAGE).

Applications:

WB: 1:2000~1:5000

Storage&Stability:

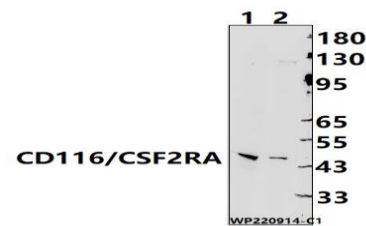
Store at 4 °C short term. Aliquot and store at -20 °C long

term. Avoid freeze-thaw cycles.

Specificity:

CD116/CSF2RA polyclonal antibody detects endogenous levels of CD116/CSF2RA protein.

DATA:



Western blot (WB) analysis of CD116/CSF2RA polyclonal antibody at 1:2000 dilution

Lane1:MCF-7 cell membrane lysate(25ug)

Lane2:LO2 cell membrane lysate(25ug)

Note:

For research use only, not for use in diagnostic procedure.