

Caspase-9 (T125) polyclonal antibody

Catalog: BCP00343

Host: Rabbit

Reactivity: Human

BackGround:

Caspase-9 (ICE-LAP6, Mch6) is an important member of the cysteine aspartic acid protease (caspase) family. Upon apoptotic stimulation, cytochrome c released from mitochondria associates with the 47 kDa procaspase-9/Apaf-1. Apaf-1 mediated activation of caspase-9 involves intrinsic proteolytic processing resulting in cleavage at Asp315 and producing a p35 subunit. Another cleavage occurs at Asp330 producing a p37 subunit that can serve to amplify the apoptotic response. Cleaved caspase-9 further processes other caspase members, including caspase-3 and caspase-7, to initiate a caspase cascade, which leads to apoptosis.

Product:

Rabbit IgG, 1mg/ml in PBS with 0.02% sodium azide, 50% glycerol, pH7.2.

Molecular Weight:

~ 37, 40/40, 46 kDa

Swiss-Prot:

P55211

Purification&Purity:

The antibody was affinity-purified from rabbit antiserum by affinity-chromatography using epitope-specific immunogen and the purity is > 95% (by SDS-PAGE).

Applications:

WB: 1:1000~1:2000

IP: 1:50~1:200

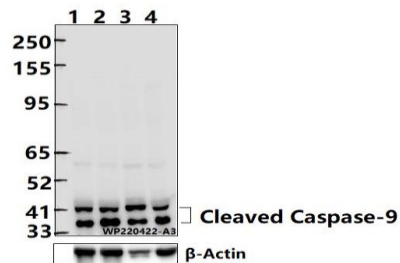
Storage&Stability:

Store at 4 °C short term. Aliquot and store at -20 °C long term. Avoid freeze-thaw cycles.

Specificity:

Caspase-9 (T125) polyclonal antibody detects endogenous levels of Caspase-9 protein.

DATA:



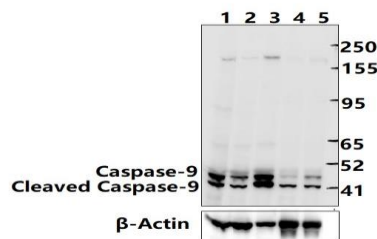
Western blot (WB) analysis of Caspase-9 (T125) polyclonal antibody at 1:1000 dilution

Lane1: Jurkat whole cell lysate(40ug)

Lane2: Jurkat treated with etoposide(25μM, 5 hours) whole cell lysate(40ug)

Lane3: K562 whole cell lysate(40ug)

Lane4: Jurkat whole cell lysate(40ug)



Western blot (WB) analysis of Caspase-9 (T125) polyclonal antibody at 1:5000 dilution

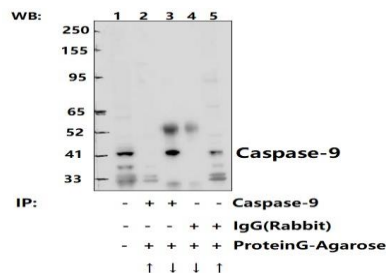
Lane1: A549 whole cell lysate(40ug)

Lane2: Jurkat whole cell lysate(40ug)

Lane3: K562 whole cell lysate(40ug)

Lane4: Jurkat treated with etoposide(25μM, 5 hours) whole cell lysate(40ug)

Lane5: Jurkat whole cell lysate(40ug)



Immunoprecipitation of K562 cell lysates using Caspase-9 (T125) pAb (Sepharose Bead Conjugate)#BD0048 (lane 2 and lane 3) and Nonspecific IgG Control (Sepharose Bead Conjugate)#BD0048 (lane 4 and lane 5). Lane 1 is 30% input. The western blot was probed using Caspa-

se-9 (T125) pAb.

For research use only, not for use in diagnostic procedure.

Note: