

## Casein Kinase II $\beta$ (phospho-S209) polyclonal antibody

Catalog: BCP00333

Host: Rabbit

Reactivity: Human, Mouse, Rat

### BackGround:

CK2 (formerly called Casein Kinase II) is a highly conserved protein kinase with more than 300 substrates regulating cell growth, cell death, and cell survival. CK2 has been implicated in the response to UV irradiation-induced DNA damage, targeting XRCC1 and BRCA1 as well as regulating p53 tumor suppressor protein functions. Furthermore, CK2 plays a key role in NF- $\kappa$ B activation.

### Product:

Rabbit IgG, 1mg/ml in PBS with 0.02% sodium azide, 50% glycerol, pH7.2

### Molecular Weight:

~ 27 kDa

### Swiss-Prot:

P67870

### Purification&Purity:

The antibody was affinity-purified from rabbit antiserum by affinity-chromatography using epitope-specific immunogen and the purity is > 96% (by SDS-PAGE).

### Applications:

WB: 1:500~1:1000

### Storage&Stability:

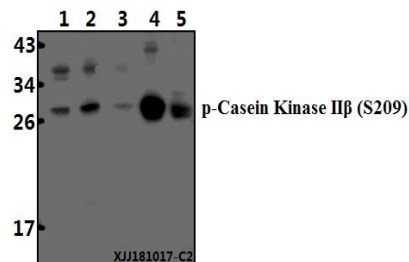
Store at 4 °C short term. Aliquot and store at -21 °C long term. Avoid freeze-thaw cycles.

### Specificity:

Casein Kinase II $\beta$  (phospho-S209) polyclonal antibody detects endogenous levels of Casein Kinase II $\beta$  protein

only when phosphorylated at Ser209.

### DATA:



Western blot (WB) analysis of Casein Kinase II $\beta$  (phospho-S209) polyclonal antibody at 1:500 dilution

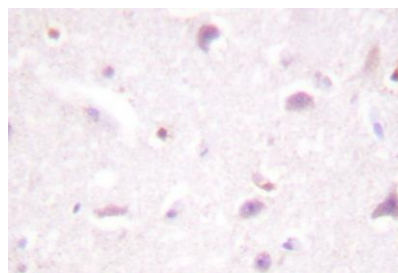
Lane1:HEK293T whole cell lysate(40  $\mu$ g)

Lane2:Panc1 whole cell lysate(40  $\mu$ g)

Lane3:U-87MG whole cell lysate(40  $\mu$ g)

Lane4:The Brain tissue lysate of Rat(40  $\mu$ g)

Lane5:The Kidney tissue lysate of Mouse(40  $\mu$ g)



### Note:

For research use only, not for use in diagnostic procedure.