

## Calnexin (D577) polyclonal antibody

Catalog: BCP00318

Host: Rabbit

Reactivity: Human, Mouse, Rat

### BackGround:

Calnexin and Calregulin (also called Calreticulin) are calcium-binding proteins that are localized to the endoplasmic reticulum—Calnexin to the membrane and Calregulin to the lumen. Calnexin is a type I membrane protein that interacts with newly synthesized glycoproteins in the endoplasmic reticulum. It may play a role in assisting with protein assembly and in retaining unassembled protein subunits in the endoplasmic reticulum. Calregulin has both low- and high-affinity calcium-binding sites. Neither Calnexin nor Calregulin contains the calcium-binding “E-F hand” motif found in calmodulins. Calnexin and Calregulin are important for the maturation of glycoproteins in the endoplasmic reticulum and appear to bind many of the same proteins.

### Product:

Rabbit IgG, 1mg/ml in PBS with 0.02% sodium azide, 50% glycerol, pH7.2

### Molecular Weight:

~ 90 kDa

### Swiss-Prot:

P27824

### Purification&Purity:

The antibody was affinity-purified from rabbit antiserum by affinity-chromatography using epitope-specific immunogen and the purity is > 95% (by SDS-PAGE).

### Applications:

WB: 1:500~1:1000

IHC/IF: 1:50~1:200

IP: 1:10~1:100

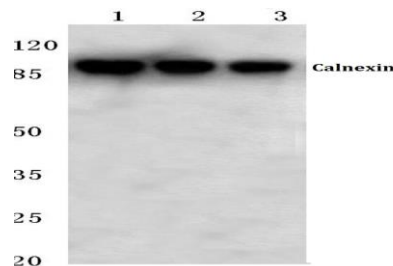
### Storage&Stability:

Store at 4 °C short term. Aliquot and store at -20 °C long term. Avoid freeze-thaw cycles.

### Specificity:

Calnexin (D577) polyclonal antibody detects endogenous levels of Calnexin protein.

### DATA:



Western blot (WB) analysis of Calnexin (D577) polyclonal antibody at 1:500 dilution

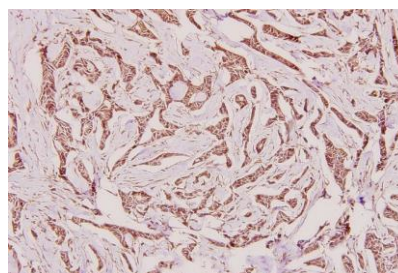
Lane1:786-O whole cell lysate(40ug)

Lane2:HEK293T whole cell lysate(40ug)

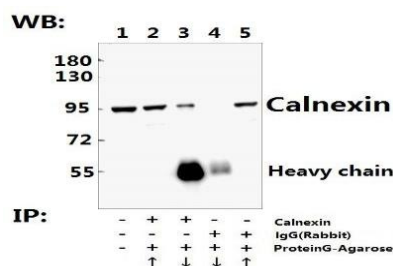
Lane3:PC12 whole cell lysate(40ug)

Lane4:The kidney tissue lysate of Fetal Mouse(40ug)

Lane5:The kidney tissue lysate of Fetal Rat(40ug)



Immunohistochemistry (IHC) analyzes of Calnexin (D577) pAb in paraffin-embedded human breast carcinoma tissue at 1:100.



Immunoprecipitation of L02 whole cell lysate using Calnexin (D577)

pAb (Sepharose Bead Conjugate) #BD0047(lane 2 and lane 3) and

Nonspecific IgG Control (Sepharose Bead Conjugate)#BD0047 (lane 4 and lane 5) .Lane 1 is 20% input. The western blot was probed using Calnexin (D577) pAb. “↑” (supernatant) ; “↓” (deposition)

### Note:

For research use only, not for use in diagnostic procedure.