

Caldesmon (S783) polyclonal antibody

Catalog: BCP00316

Host: Rabbit

Reactivity: Human, Mouse, Rat

BackGround:

Caldesmon, Filamin 1, Nebulin and Villin are differentially expressed and regulated Actin binding proteins. Both muscular and non-muscular forms of Caldesmon have been identified and each has been shown to bind to Actin as well as to calmodulin and Myosin. Alternative splicing of the gene encoding Caldesmon results in five isoforms. Muscular Caldesmon (isoform 1), also designated high molecular weight Caldesmon or H-Caldesmon (H-CAD), is expressed predominantly on thin filaments in smooth muscle. Non-muscular Caldesmon (isoforms 2-5), also designated low molecular weight Caldesmon or L-Caldesmon (L-CAD), is widely expressed in non-muscle tissues and cells.

Product:

Rabbit IgG, 1mg/ml in PBS with 0.02% sodium azide, 50% glycerol, pH7.2

Molecular Weight:

70-80 kDa non-muscle

120-150 kDa smooth muscle

Swiss-Prot:

Q05682

Purification&Purity:

The antibody was affinity-purified from rabbit antiserum by affinity-chromatography using epitope-specific immunogen and the purity is > 95% (by SDS-PAGE).

Applications:

WB: 1:500~1:1000

IHC: 1:50~1:200

IF: 1:50~1:200

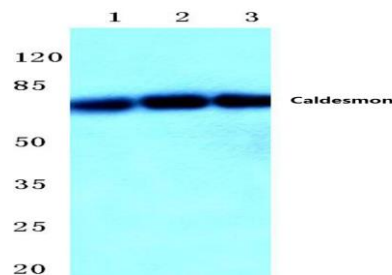
Storage&Stability:

Store at 4 °C short term. Aliquot and store at -20 °C long term. Avoid freeze-thaw cycles.

Specificity:

Caldesmon (S783) polyclonal antibody detects endogenous levels of Caldesmon protein.

DATA:



Western blot (WB) analysis of Caldesmon (S783) polyclonal antibody at 1:500 dilution

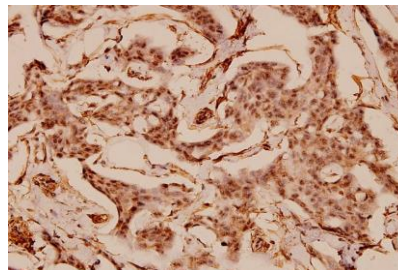
Lane1:MCF-7 whole cell lysate(20ug)

Lane2:Hela whole cell lysate(40ug)

Lane3:A549 whole cell lysate(40ug)

Lane4:PC12 whole cell lysate(40ug)

Lane5:MEF whole cell lysate(40ug)



Immunohistochemistry (IHC) analyzes of Caldesmon (S783) pAb in paraffin-embedded human breast carcinoma tissue at 1:100.

Note:

For research use only, not for use in diagnostic procedure.