

**BMP-8A (Q299) polyclonal antibody**

Catalog: BCP00292

Host: Rabbit

Reactivity: Human,Rat,Mouse

**BackGround:**

Induces cartilage and bone formation. May be the osteo-inductive factor responsible for the phenomenon of epithelial osteogenesis. Plays a role in calcium regulation and bone homeostasis (By similarity). Signaling protein involved in regulation of thermogenesis and energy balance. Proposed to increase the peripheral response of brown adipose tissue (BAT) to adrenergic stimulation while acting centrally in the hypothalamus to increase sympathetic output to BAT.

**Product:**

Rabbit IgG, 1mg/ml in PBS with 0.02% sodium azide, 50% glycerol, pH7.2.

**Molecular Weight:**

~ 45 kDa

**Swiss-Prot:**

Q7Z5Y6

**Purification&Purity:**

The antibody was affinity-purified from rabbit antiserum by affinity-chromatography using epitope-specific immunogen and the purity is > 95% (by SDS-PAGE).

**Applications:**

WB: 1:5000~1:10000

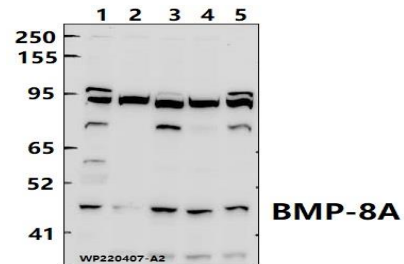
**Storage&Stability:**

Store at 4 °C short term. Aliquot and store at -20 °C long term. Avoid freeze-thaw cycles.

**Specificity:**

BMP-8A (Q299) polyclonal antibody detects endogenous

levels of BMP-8A protein.

**DATA:**

Western blot (WB) analysis of BMP-8A polyclonal antibody at 1:5000 dilution

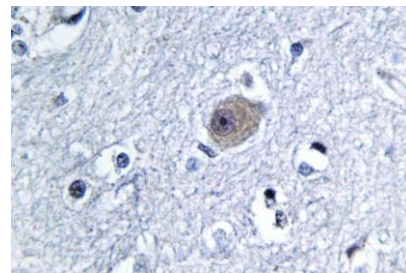
Lane1:Jurkat whole cell lysate(40ug)

Lane2:HeLa whole cell lysate(40ug)

Lane3:MCF-7 whole cell lysate(40ug)

Lane4:PC12 whole cell lysate(40ug)

Lane5:CT-26 whole cell lysate(40ug)

**Note:**

For research use only, not for use in diagnostic procedure.