

BMP-5 (L163) polyclonal antibody

Catalog: BCP00290

Host: Rabbit

Reactivity: Human

BackGround:

Growth factor of the TGF-beta superfamily that plays essential roles in many developmental processes, including cartilage and bone formation or neurogenesis. Initiates the canonical BMP signaling cascade by associating with type I receptor BMPRI1 and type II receptor BMPRII. In turn, BMPRI1 propagates signal by phosphorylating SMAD1/5/8 that travel to the nucleus and act as activators and repressors of transcription of target genes. Can also signal through non-canonical pathway such as MAPK p38 signaling cascade to promote chondrogenic differentiation.

Product:

Rabbit IgG, 1mg/ml in PBS with 0.02% sodium azide, 50% glycerol, pH7.2.

Molecular Weight:

~ 53 kDa

Swiss-Prot:

P22003

Purification&Purity:

The antibody was affinity-purified from rabbit antiserum by affinity-chromatography using epitope-specific immunogen and the purity is > 95% (by SDS-PAGE).

Applications:

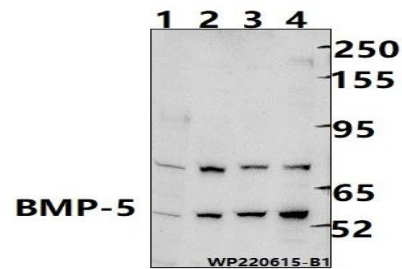
WB: 1:2000~1:5000

Storage&Stability:

Store at 4 °C short term. Aliquot and store at -20 °C long term. Avoid freeze-thaw cycles.

Specificity:

BMP-5 (L163) polyclonal antibody detects endogenous levels of BMP-5 protein.

DATA:

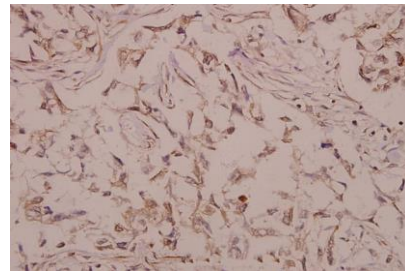
Western blot (WB) analysis of BMP-5 (L163) polyclonal antibody at 1:2000 dilution

Lane1: EC9706 whole cell lysate (30ug)

Lane2: HCT116 whole cell lysate (30ug)

Lane3: A549 whole cell lysate (30ug)

Lane4: HEK293T whole cell lysate (30ug)

**Note:**

For research use only, not for use in diagnostic procedure.