

Beclin 1 polyclonal antibody

Catalog: BCP00281

Host: Rabbit

Reactivity: Human, Mouse, Rat

BackGround:

BECN1 (beclin 1) is a coiled-coil protein that has been implicated as an inhibitor of tumorigenesis. BECN1, which associates with Bcl-2, plays a significant role in autophagy. Autophagy is the degradation of cellular proteins in the lysosomes, and when this pathway is suppressed, cell growth is deregulated. Autophagy is controlled by the same signal transduction pathway that induces the phosphorylation of the ribosomal protein S6, and both are mediated via amino acids. BECN1 expression in various carcinoma cell lines, such as MCF7, is low, whereas it is ubiquitously expressed in normal breast tissue.

Product:

Rabbit IgG, 1mg/ml in PBS with 0.02% sodium azide, 50% glycerol, pH7.2

Molecular Weight:

~ 60 kDa

Swiss-Prot:

Q14457

Purification&Purity:

The antibody was affinity-purified from rabbit antiserum by affinity-chromatography using epitope-specific immunogen and the purity is > 95% (by SDS-PAGE).

Applications:

WB 1:500 - 1:2000 IHC 1:50 - 1:200 IF 1:50 - 1:200

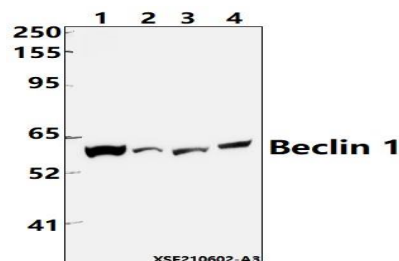
Storage&Stability:

Store at 4 °C short term. Aliquot and store at -20 °C long term. Avoid freeze-thaw cycles.

Specificity:

Beclin 1 polyclonal antibody detects endogenous levels of Beclin 1 protein.

DATA:



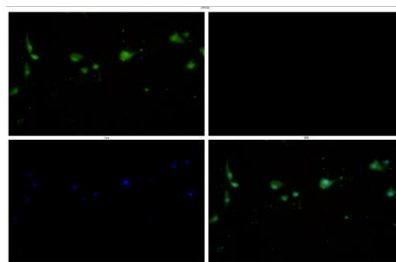
Western blot (WB) analysis of Beclin 1 polyclonal antibody at 1:1000 dilution

Lane1:U-87MG whole cell lysate(40ug)

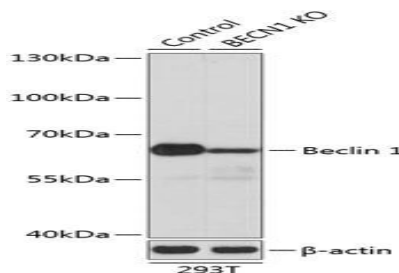
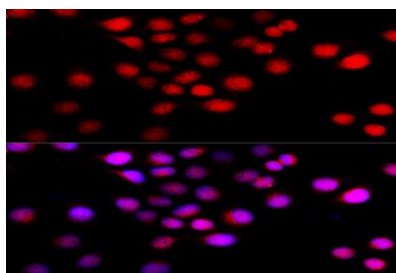
Lane2:MCF-7 whole cell lysate(40ug)

Lane3:CT-26 whole cell lysate(40ug)

Lane4:PC12 whole cell lysate(40ug)



Immunofluorescence analysis of U-87MG cells using Beclin 1 antibody at dilution of 1:50.



Note:

For research use only, not for use in diagnostic procedure.