

Beclin 1 (R238) polyclonal antibody

Catalog: BCP00280

Host: Rabbit

Reactivity: Human,Rat,Mouse

BackGround:

BECN1 (beclin 1) is a coiled-coil protein that has been implicated as an inhibitor of tumorigenesis. BECN1, which associates with Bcl-2, plays a significant role in autophagy. Autophagy is the degradation of cellular proteins in the lysosomes, and when this pathway is suppressed, cell growth is deregulated. Autophagy is controlled by the same signal transduction pathway that induces the phosphorylation of the ribosomal protein S6, and both are mediated via amino acids. BECN1 expression in various carcinoma cell lines, such as MCF7, is low, whereas it is ubiquitously expressed in normal breast tissue. In transfected MCF7 cells, BECN1 complements autophagocytosis and, subsequently, inhibits cellular proliferation. Additionally, BECN1 shares structural similarity to the yeast autophagy gene product, APG6, and was one of the first mammalian proteins discovered to mediate autophagy.

Product:

Rabbit IgG, 1mg/ml in PBS with 0.02% sodium azide, 50% glycerol, pH7.2

Molecular Weight:

~ 51 kDa

Swiss-Prot:

Q14457

Purification&Purity:

The antibody was affinity-purified from rabbit antiserum by affinity-chromatography using epitope-specific immunogen and the purity is > 95% (by SDS-PAGE).

Applications:

WB: 1:1000~1:2000

IF: 1:50~1:200

Storage&Stability:

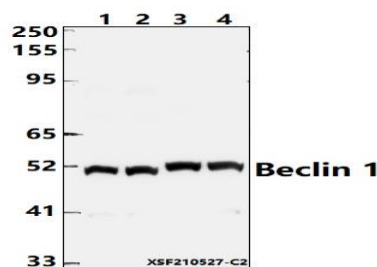
Store at 4 °C short term. Aliquot and store at -20 °C long

term. Avoid freeze-thaw cycles.

Specificity:

Beclin 1(R238) polyclonal antibody detects endogenous levels of Beclin 1 protein.

DATA:



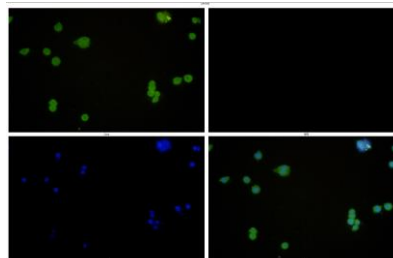
Western blot (WB) analysis of Beclin 1 polyclonal antibody at 1:1000 dilution

Lane1:MCF-7 whole cell lysate(40ug)

Lane2:HEK293T whole cell lysate(40ug)

Lane3:The Brain tissue lysate of Mouse(40ug)

Lane4:The Brain tissue lysate of Rat(40ug)



Immunofluorescence analysis of MCF-7 cells using Beclin 1 (R238) antibody at dilution of 1:50.

Note:

For research use only, not for use in diagnostic procedure.