

## Bcl-2 (P65) polyclonal antibody

Catalog: BCP00270

Host: Rabbit

Reactivity: Human,Mouse,Rat

### BackGround:

Bcl-2 is one among many key regulators of apoptosis which are essential for proper development, tissue homeostasis and protection against foreign pathogens. Human Bcl-2 is a 26 kDa, membrane-associated, anti-apoptotic oncoprotein that can promote cell survival through protein-protein interactions with other Bcl-2 related family members, such as the death suppressors Bcl-xL, Mcl-1, Bcl-w and A1, or the death agonists Bax, Bak, Bik, Bad and BID. The anti-apoptotic function of Bcl-2 can also be regulated through proteolytic processing and phosphorylation. Bcl-2 may promote cell survival by interfering with the activation of the cytochrome c/Apaf-1 pathway through stabilization of the mitochondrial membrane.

### Product:

Rabbit IgG, 1mg/ml in PBS with 0.02% sodium azide, 50% glycerol, pH7.2

### Molecular Weight:

~ 26 kDa

### Swiss-Prot:

P10415

### Purification&Purity:

The antibody was affinity-purified from rabbit antiserum by affinity-chromatography using epitope-specific immunogen and the purity is > 95% (by SDS-PAGE).

### Applications:

WB: 1:500~1:1000

IHC: 1:50~1:200

IF: 1:50~1:200

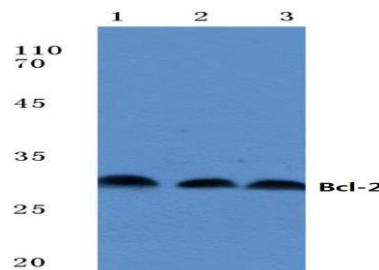
### Storage&Stability:

Store at 4 °C short term. Aliquot and store at -20 °C long term. Avoid freeze-thaw cycles.

### Specificity:

Bcl-2 (P65) polyclonal antibody detects endogenous levels of Bcl-2 protein.

### DATA:



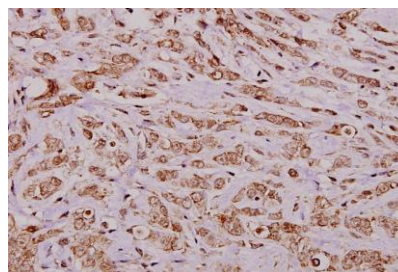
Western blot (WB) analysis of Bcl-2 (P65) polyclonal antibody at 1:500 dilution

Lane1:K562 whole cell lysate(40ug)

Lane2:A549 whole cell lysate(40ug)

Lane3:PMVEC whole cell lysate(40ug)

Lane4:AML-12 whole cell lysate(40ug)



Immunohistochemistry (IHC) analyzes of Bcl-2 (P65) pAb in paraffin-embedded human breast carcinoma tissue at 1:100.

### Note:

For research use only, not for use in diagnostic procedure.