

BCKDK (E41) polyclonal antibody

Catalog: BCP00269

Host: Rabbit

Reactivity: Human,Mouse,Rat

BackGround:

BCKDK (branched chain ketoacid dehydrogenase kinase), also known as BCKDHKIN, is a 412 amino acid mitochondrial matrix protein that exists as a monomer and contains one histidine kinase domain. Expressed ubiquitously, BCKDK catalyzes the ATP-dependent phosphorylation and subsequent inactivation of the branched-chain α -ketoacid dehydrogenase (BCKD) complex, a regulatory enzyme complex that plays a crucial role in the catabolic pathways of valine, leucine and isoleucine. Specifically, the BCKD complex functions as the second enzyme in branched-chain amino acid (BCAA) catabolism, effectively catalyzing the irreversible oxidative decarboxylation of BCAAs. Due to the ability of BCKDK to regulate the activity of the BCKD complex, BCKDK plays an essential role in the catabolic pathways of branched-chain amino acid metabolism.

Product:

Rabbit IgG, 1mg/ml in PBS with 0.02% sodium azide, 50% glycerol, pH7.2

Molecular Weight:

~ 46 kDa

Swiss-Prot:

O14874

Purification&Purity:

The antibody was affinity-purified from rabbit antiserum by affinity-chromatography using epitope-specific immunogen and the purity is > 95% (by SDS-PAGE).

Applications:

WB: 1:500~1:1000

IHC: 1:50~1:200

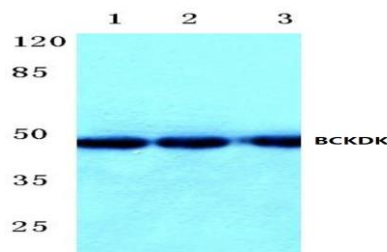
IP 1:50 - 1:100

Storage&Stability:

Store at 4 °C short term. Aliquot and store at -20 °C long term. Avoid freeze-thaw cycles.

Specificity:

BCKDK (E41) polyclonal antibody detects endogenous levels of BCKDK protein.

DATA:

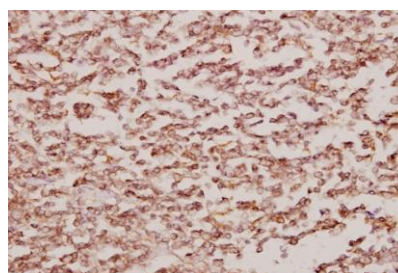
Western blot (WB) analysis of BCKDK (E41) polyclonal antibody at 1:500 dilution

Lane1:C6 whole cell lysate(40ug)

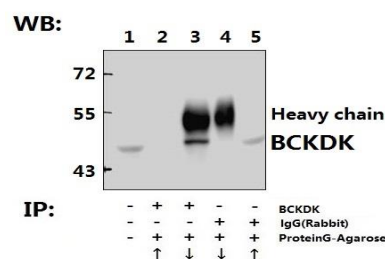
Lane2:AML-12 whole cell lysate(40ug)

Lane3:HEK293T whole cell lysate(40ug)

Lane4:L02 whole cell lysate(40ug)



Immunohistochemistry (IHC) analyzes of BCKDK (E41) pAb in paraffin-embedded human tonsil carcinoma tissue at 1:50.



Immunoprecipitation of HEK293T cell lysate using BCKDK (E41) pAb (Sepharose Bead Conjugate) #BD0048(lane 2 and lane 3) and Nonspecific IgG Control (Sepharose Bead Conjugate) #BD0048 (lane 4 and lane 5). Lane 1 is 30% input. The western blot was probed using BCKDK (E41). “↑” (supernatant) ; “↓” (deposition)

Note:

For research use only, not for use in diagnostic procedure.

