

BATF2 polyclonal antibody

Catalog: BCP00267

Host: Rabbit

Reactivity: Human

BackGround:

BATF2 (basic leucine zipper transcription factor, ATF-like 2) is a 274 amino acid protein that localizes to the nucleus and contains one bZIP domain, suggesting that it may be involved in transcriptional regulation. The gene encoding BATF2, which is expressed as multiple alternatively spliced isoforms, is located on human chromosome 11. With approximately 135 million base pairs and 1,400 genes, chromosome 11 comprises approximately 4% of human genomic DNA and is considered a gene and disease association dense chromosome. The chromosome 11 encoded Atm gene is important for regulation of cell cycle arrest and apoptosis following double strand DNA breaks. Atm mutation leads to the disorder known as ataxia-telangiectasia. The blood disorders Sickle cell anemia and thalassemia are caused by HBB gene mutations, while Wilms' tumors, WAGR syndrome and Denys-Drash syndrome are associated with mutations of the WT1 gene. Jervell and Lange-Nielsen syndrome, Jacobsen syndrome, Niemann-Pick disease, hereditary angioedema and Smith-LemliOpitz syndrome are also associated with defects in chromosome 11-encoded genes.

Product:

Rabbit IgG, 1mg/ml in PBS with 0.02% sodium azide, 50% glycerol, pH7.2.

Molecular Weight:

~ 30kDa

Swiss-Prot:

Q8N1L9

Purification&Purity:

The antibody was affinity-purified from rabbit antiserum by affinity-chromatography using epitope-specific immunogen and the purity is > 95% (by SDS-PAGE).

Applications:

WB: 1:5000~1:10000

IHC: 1:50~1:100

Storage&Stability:

Store at 4 °C short term. Aliquot and store at -20 °C long term. Avoid freeze-thaw cycles.

Specificity:

BATF2 polyclonal antibody detects endogenous levels of BATF2 protein.

DATA:



Western blot (WB) analysis of Rock-1 polyclonal antibody at 1:5000 dilution

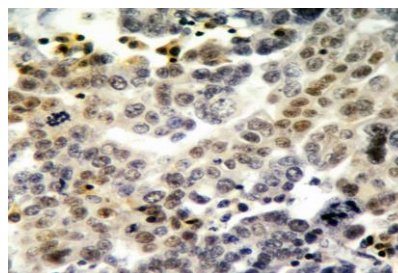
Lane1:The spleen tissue lysate of Rat(40ug)

Lane2:The spleen tissue lysate of mouse(40ug)

Lane3:Raw264.7 whole cell lysate(40ug)

Lane4:PC12 whole cell lysate(40ug)

Lane5:THP-1 whole cell lysate(40ug)



Immunohistochemistry of paraffin-embedded Human ovarian cancer using BATF2 antibody at dilution of 1:50 (40x lens).

Note:

For research use only, not for use in diagnostic procedure.