

## Aven (P329) polyclonal antibody

Catalog: BCP00260

Host: Rabbit

Reactivity: Human,Mouse,Rat

### BackGround:

The Bcl-2 family regulates apoptosis in response to a wide range of stimuli through control of mitochondrial cytochrome c release and caspase activation. Cytosolic Apaf-1 forms a complex with caspase-9 in the presence of cytochrome c and dATP, ultimately leading to caspase-9 activation and subsequent activation of caspase-3. A large number of proteins have been found to interact with Bcl-2 and other family members that have been shown to help regulate apoptosis. Aven was identified in a yeast two-hybrid screen as a bcl-xL interacting protein. It also interacts with other anti-apoptotic family members, including Bcl-2, but fails to interact with pro-apoptotic proteins Bax and Bak. Aven inhibits apoptosis and enhances anti-apoptotic activity of Bcl-xL. It interferes with association with Apaf-1 and activation of caspase-9. Aven overexpression is associated with poor prognosis in acute lymphoblastic leukemia.

### Product:

Rabbit IgG, 1mg/ml in PBS with 0.02% sodium azide, 50% glycerol, pH7.2

### Molecular Weight:

~ 50 kDa

### Swiss-Prot:

Q9NQS1

### Purification&Purity:

The antibody was affinity-purified from rabbit antiserum by affinity-chromatography using epitope-specific im-

munogen and the purity is > 95% (by SDS-PAGE).

### Applications:

WB: 1:1000~1:2000

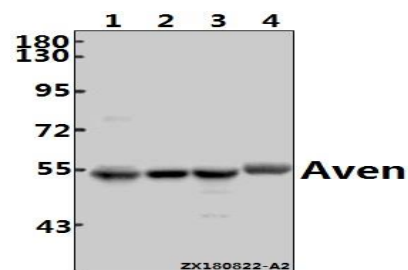
### Storage&Stability:

Store at 4 °C short term. Aliquot and store at -20 °C long term. Avoid freeze-thaw cycles.

### Specificity:

Aven pAb detects endogenous levels of Aven protein.

### DATA:



Western blot (WB) analysis of Aven (P329) pAb at 1:1000 dilution

Lane1:HCT116 whole cell lysate(40ug)

Lane2:L02 whole cell lysate(40ug)

Lane3:The Testis tissue lysate of Mouse(40ug)

Lane4:The Heart tissue lysate of Rat(40ug)

### Note:

For research use only, not for use in diagnostic procedure.