

## ATG4D polyclonal antibody

Catalog: BCP00249

Host: Rabbit

Reactivity: Human, Mouse, Rat

### BackGround:

Atg4D (autophagy-related gene 4D), also known as APG4D or AUTL4, is a 474 amino acid protein that localizes to the cytoplasm and belongs to the C-54 family of cysteine proteases. Expressed predominately in skeletal muscle, but also present in testis, Atg4D functions as a cysteine protease that is required for autophagy and functions to specifically cleave the C-terminal region of target proteins, thereby allowing the target proteins to bind to autophagosomes. The enzymatic activity of Atg4D is inhibited by Nethylmaleimide, a thiol reactive compound that is capable of modifying cystine residues in proteins and peptides.

### Product:

Rabbit IgG, 1mg/ml in PBS with 0.02% sodium azide, 50% glycerol, pH7.2

### Molecular Weight:

~ 53 kDa

### Swiss-Prot:

Q86TL0

### Purification&Purity:

The antibody was affinity-purified from rabbit antiserum by affinity-chromatography using epitope-specific immunogen and the purity is > 95% (by SDS-PAGE).

### Applications:

WB 1:500 - 1:2000

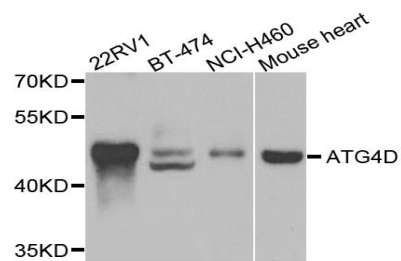
### Storage&Stability:

Store at 4 °C short term. Aliquot and store at -20 °C long term. Avoid freeze-thaw cycles.

### Specificity:

ATG4D polyclonal antibody detects endogenous levels of ATG4D protein.

### DATA:



Western blot (WB) analysis of ATG4D pAb at 1:1000 dilution

Lane1: The Lung tissue lysate of Mouse(40ug)

Lane2: The Lung tissue lysate of Rat(40ug)

Lane3: H1792 whole cell lysate(40ug)

Lane4: SGC7901 whole cell lysate(40ug)

### Note:

For research use only, not for use in diagnostic procedure.