

**ATG12 (S129) polyclonal antibody**

Catalog: BCP00245

Host: Rabbit

Reactivity: Human,Mouse,Rat

**BackGround:**

Atg12 (autophagy-related protein 12), also known as APG12, APG12L, FBR93 or HAPG12, is a 140 amino acid protein that is ubiquitously expressed and belongs to the Atg12 family of proteins. Atg12 is a homolog of the yeast protein Apg12 that participates in autophagy. Autophagy is a membrane trafficking mechanism that delivers cytoplasmic cargo to the vacuole/lysosome for degradation and recycling.

**Product:**

Rabbit IgG, 1mg/ml in PBS with 0.02% sodium azide, 50% glycerol, pH7.2

**Molecular Weight:**

~ 18, 55 kDa

**Swiss-Prot:**

O94817

**Purification&Purity:**

The antibody was affinity-purified from rabbit antiserum by affinity-chromatography using epitope-specific immunogen and the purity is > 95% (by SDS-PAGE).

**Applications:**

WB: 1:500~1:1000

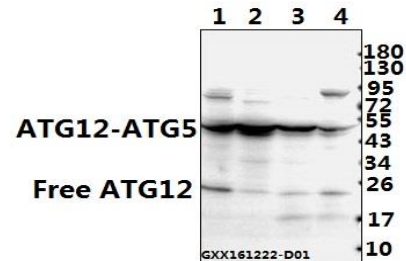
IHC: 1:50~1:200

**Storage&Stability:**

Store at 4 °C short term. Aliquot and store at -20 °C long term. Avoid freeze-thaw cycles.

**Specificity:**

ATG12 (S129) polyclonal antibody detects endogenous levels of ATG12 protein.

**DATA:**

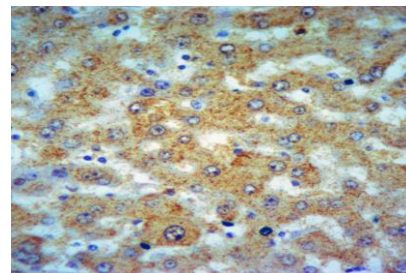
Western blot (WB) analysis of ATG12 (S129) polyclonal antibody at 1:500 dilution

Lane1:C6 whole cell lysate(40ug)

Lane2:CT26 whole cell lysate(40ug)

Lane3:HepG2 whole cell lysate(40ug)

Lane4:HCT116 whole cell lysate(40ug)



Immunohistochemistry of paraffin-embedded Human Liver cancer using ATG12 antibody at dilution of 1:50.

**Note:**

For research use only, not for use in diagnostic procedure.