

ATF2 (G56) polyclonal antibody

Catalog: BCP00241

Host: Rabbit

Reactivity: Human, Mouse, Rat

BackGround:

The transcription factor ATF-2 (also called CRE-BP1) binds to both AP-1 and CRE DNA response elements and is a member of the ATF/CREB family of leucine zipper proteins. ATF-2 interacts with a variety of viral oncoproteins and cellular tumor suppressors and is a target of the SAPK/JNK and p38 MAP kinase signaling pathways. Various forms of cellular stress, including genotoxic agents, inflammatory cytokines and UV irradiation, stimulate the transcriptional activity of ATF-2. Cellular stress activates ATF-2 by phosphorylation of Thr69 and Thr71. Both SAPK and p38 MAPK have been shown to phosphorylate ATF-2 at these sites in vitro and in cells transfected with ATF-2.

Product:

Rabbit IgG, 1mg/ml in PBS with 0.02% sodium azide, 50% glycerol, pH7.2

Molecular Weight:

~ 55 to 75 kDa

Swiss-Prot:

P15336

Purification&Purity:

The antibody was affinity-purified from rabbit antiserum by affinity-chromatography using epitope-specific immunogen and the purity is > 95% (by SDS-PAGE).

Applications:

WB: 1:500~1:1000

IHC: 1:50~1:200

IP: 1:50~1:200

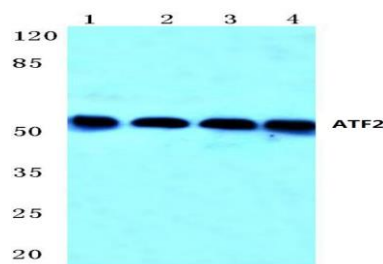
Storage&Stability:

Store at 4 °C short term. Aliquot and store at -20 °C long term. Avoid freeze-thaw cycles.

Specificity:

ATF2(G56) polyclonal antibody detects endogenous levels of ATF2 protein.

DATA:



Western blot (WB) analysis of ATF2 (G56) polyclonal antibody at 1:500 dilution

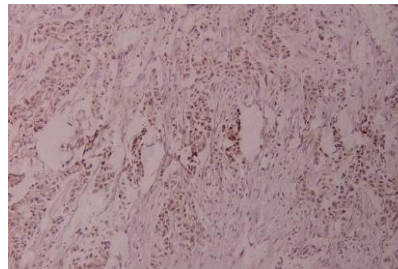
Lane1:The Brain tissue lysate of Mouse(40ug)

Lane2:The Brain tissue lysate of Rat(40ug)

Lane3:AML-12 whole cell lysate(40ug)

Lane4:L02 whole cell lysate(40ug)

Lane5:MCF-7 whole cell lysate(40ug)



Immunohistochemistry (IHC) analyzes of ATF2 (G56) pAb in paraffin-embedded human breast carcinoma tissue at 1:100.

Note:

For research use only, not for use in diagnostic procedure.