

AR- α 1A (Q365) polyclonal antibody

Catalog: BCP00235

Host: Rabbit

Reactivity: Human

BackGround:

α 1A-adrenergic receptors (α 1A-ARs) mediate actions in the sympathetic nervous system through the binding of the catecholamines, epinephrine and norepinephrine. α 1A-AR couples to Gq/11 and regulates blood pressure due to changes in vascular tone and cardiac output. Alternative splicing of the ADRA1A gene generates four isoforms with distinct C-termini, and the different expression profile of these subtypes produces distinct patterns of activation. α 1A-AR transcripts are abundant in heart, brain, liver and prostate. α 1A-AR transcript sizes of 6.0, 4.0, 3.0, and 2.0 kb have been detected in liver. Transcripts of 6.0, 4.0 and 3.0 kb have been detected in heart, and transcripts of 6.0 and 4.0 kb have been detected in prostate

Product:

Rabbit IgG, 1mg/ml in PBS with 0.02% sodium azide, 50% glycerol, pH7.2

Molecular Weight:

~ 51 kDa

Swiss-Prot:

P35348

Purification&Purity:

The antibody was affinity-purified from rabbit antiserum by affinity-chromatography using epitope-specific immunogen and the purity is > 95% (by SDS-PAGE).

Applications:

WB: 1:500~1:1000

IHC: 1:50~1:200

IF: 1:50~1:200

Storage&Stability:

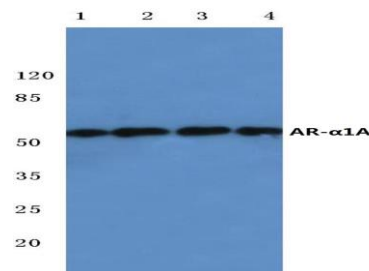
Store at 4 °C short term. Aliquot and store at -20 °C long

term. Avoid freeze-thaw cycles.

Specificity:

AR- α 1A (Q365) polyclonal antibody detects endogenous levels of AR- α 1A protein.

DATA:



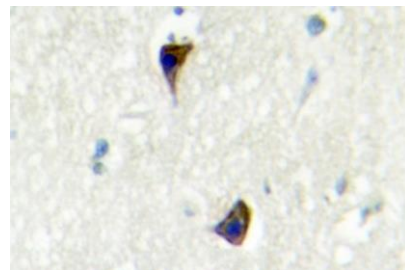
Western blot (WB) analysis of AR- α 1A (Q365) pAb at 1:500 dilution

Lane1:HepG2 whole cell lysate(40ug)

Lane2:PC3 whole cell lysate(40ug)

Lane3:LO2 whole cell lysate(40ug)

Lane4:HEK293T whole cell lysate(40ug)



Immunohistochemistry (IHC) analyzes of AR- α 1A (Q365) pAb in paraffin-embedded human brain tissue.

Note:

For research use only, not for use in diagnostic procedure.