

## AQP2 (R252) polyclonal antibody

Catalog: BCP00223

Host: Rabbit

Reactivity: Human,Mouse,Rat

### BackGround:

Many isoforms of aquaporin have been identified in mammals, designated AQP0 through AQP10. Aquaporins are widely distributed and it is not uncommon for more than one type of AQP to be present in the same cell. Although most aquaporins are only permeable to water, AQP3, AQP7, AQP9 and one of the two AQP10 transcripts are also permeable to urea and glycerol. AQP2 is the only water channel that is activated by vasopressin to enhance water reabsorption in the kidney collecting duct. Aquaporins are involved in renal water absorption, generation of pulmonary secretions, lacrimation, and the secretion and reabsorption of cerebrospinal fluid and aqueous humor.

### Product:

Rabbit IgG, 1mg/ml in PBS with 0.02% sodium azide, 50% glycerol, pH7.2

### Molecular Weight:

~ 26 kDa

### Swiss-Prot:

P41181

### Purification&Purity:

The antibody was affinity-purified from rabbit antiserum by affinity-chromatography using epitope-specific immunogen and the purity is > 95% (by SDS-PAGE).

### Applications:

WB: 1:500~1:1000

IHC: 1:50~1:200

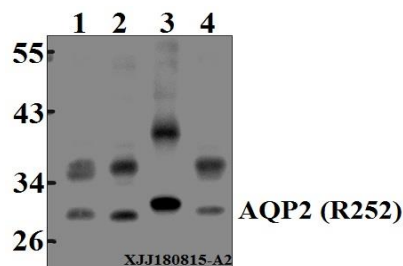
### Storage&Stability:

Store at 4 °C short term. Aliquot and store at -20 °C long term. Avoid freeze-thaw cycles.

### Specificity:

AQP2 (R252) polyclonal antibody detects endogenous levels of AQP2 protein.

### DATA:



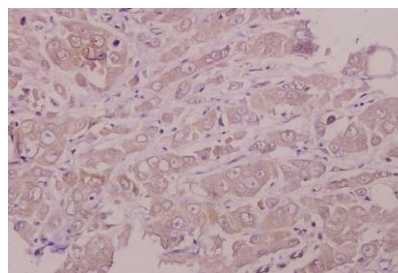
Western blot (WB) analysis of AQP2 (R252) pAb at 1:500 dilution

Lane1:HEK293T whole cell lysate(40 µg)

Lane2:Hela whole cell lysate(40 µg)

Lane3:The Kidney tissue lysate of Rat(40 µg)

Lane4:CT-26 whole cell lysate(40 µg)



Immunohistochemistry (IHC) analyzes of AQP2 (R252) pAb in paraffin-embedded human colorectal carcinoma tissue at 1:50.

### Note:

For research use only, not for use in diagnostic procedure.