

Angptl7 (P346) polyclonal antibody

Catalog: BCP00209

Host: Rabbit

Reactivity: Human,Mouse,Rat

BackGround:

Angptl7 (angiopoietin-like 7), alternately known as cornea-derived transcript 6 protein (CDT6) or AngX, is a 346 amino acid secreted protein that is expressed specifically in the stromal layer of cornea. Angptl7 forms disulfide-linked homotetramers via coiled-coil interactions and contains one fibrinogen C-terminal domain. Overexpressed in patients with glaucoma, Angptl7 serves as a potential therapeutic target for glaucoma and has been found to increase collagen expression. The gene encoding Angptl7 maps to human chromosome 1, which spans 260 million base pairs, contains over 3,000 genes and comprises nearly 8% of the human genome.

Product:

Rabbit IgG, 1mg/ml in PBS with 0.02% sodium azide, 50% glycerol, pH7.2

Molecular Weight:

~ 40 kDa

Swiss-Prot:

O43827

Purification&Purity:

The antibody was affinity-purified from rabbit antiserum by affinity-chromatography using epitope-specific immunogen and the purity is > 95% (by SDS-PAGE).

Applications:

WB: 1:500~1:1000

IHC: 1:50~1:200

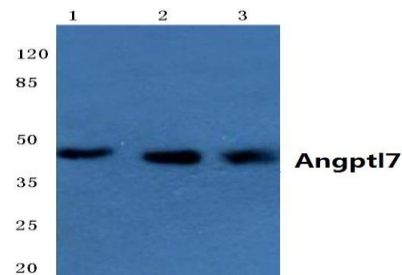
Storage&Stability:

Store at 4 °C short term. Aliquot and store at -20 °C long term. Avoid freeze-thaw cycles.

Specificity:

Angptl7 (P346) polyclonal antibody detects endogenous levels of Angptl7 protein.

DATA:



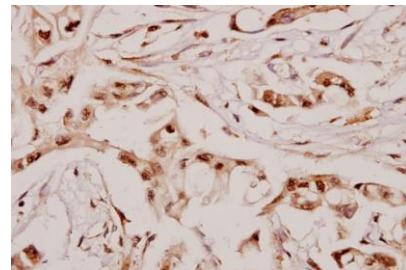
Western blot (WB) analysis of Angptl7 (P346) pAb at 1:1000 dilution

Lane1:H9C2 whole cell lysate(40ug)

Lane2:CT26 whole cell lysate(40ug)

Lane3:HeLa whole cell lysate(40ug)

Lane4:MCF-7 whole cell lysate(20ug)



Immunohistochemistry (IHC) analyzes of Angptl7 (P346) pAb in paraffin-embedded human breast carcinoma tissue at 1:50.

Note:

For research use only, not for use in diagnostic procedure.