

## ALPK1 polyclonal antibody

Catalog: BCP00204

Host: Rabbit

Reactivity: Human, Mouse

### BackGround:

ALPK1 gene was the most determinant of gout. ALPK1 gene can effectively interfere with microRNA target recognition and modulates the mRNA expression; and the varying distribution of the implicated SNPs among cases and controls in the two studied populations suggests a significant role in gout susceptibility.

### Product:

Rabbit IgG, 1mg/ml in PBS with 0.02% sodium azide, 50% glycerol, pH7.2

### Molecular Weight:

~ 130 kDa

### Swiss-Prot:

Q96QP1

### Purification&Purity:

The antibody was affinity-purified from rabbit antiserum by affinity-chromatography using epitope-specific immunogen and the purity is > 95% (by SDS-PAGE).

### Applications:

WB: 1:500~1:1000

### Storage&Stability:

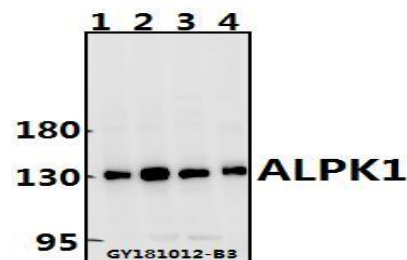
Store at 4 °C short term. Aliquot and store at -20 °C long

term. Avoid freeze-thaw cycles.

### Specificity:

ALPK1 polyclonal antibody detects endogenous levels of ALPK1 protein.

### DATA:



Western blot (WB) analysis of ALPK1 polyclonal antibody at 1:500 dilution

Lane1:L02 whole cell lysate(40ug)

Lane2:A2780 whole cell lysate(40ug)

Lane3:H1792 whole cell lysate(40ug)

Lane4:AML-12 whole cell lysate(40ug)

### Note:

For research use only, not for use in diagnostic procedure.