

Aldolase B (W148) polyclonal antibody

Catalog: BCP00203

Host: Rabbit

Reactivity: Human, Mouse, Rat

BackGround:

Aldolase A is one of the most highly conserved enzymes known, with only about 2% of the residues changing per 100 million years. Aldolase B is regulated by the hormones insulin and glucagons and has been implicated in hereditary fructose intolerance disease. Aldolase C is 36 kDa polypeptide that is exclusively expressed in Purkinje cells. Aldolase C-positive Purkinje cells are organized in the cerebellum as stripes or bands that run from anterior to posterior across the cerebellum and alternate with bands of Aldolase C-negative Purkinje cells.

Product:

Rabbit IgG, 1mg/ml in PBS with 0.02% sodium azide, 50% glycerol, pH7.2

Molecular Weight:

~ 40 to 45 kDa

Swiss-Prot:

P05062

Purification&Purity:

The antibody was affinity-purified from rabbit antiserum by affinity-chromatography using epitope-specific immunogen and the purity is > 95% (by SDS-PAGE).

Applications:

WB: 1:500~1:2000

IHC: 1:50~1:200

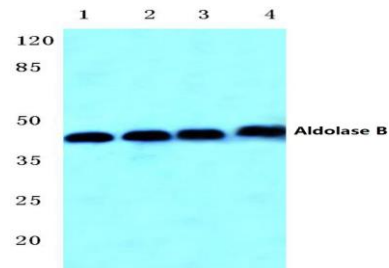
Storage&Stability:

Store at 4 °C short term. Aliquot and store at -20 °C long term. Avoid freeze-thaw cycles.

Specificity:

Aldolase B (W148) polyclonal antibody detects endogenous levels of Aldolase B protein.

DATA:



Western blot (WB) analysis of Aldolase B (W148) pAb at 1:2000 dilution

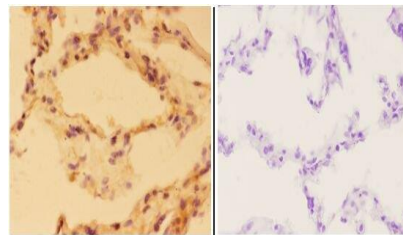
Lane1: AML-12 whole cell lysate(40ug)

Lane2: The Kidney tissue lysate of Rat(10ug)

Lane3: HepG2 whole cell lysate(40ug)

Lane4: HEK293T whole cell lysate(20ug)

Lane5: SGC7901 whole cell lysate(20ug)



Immunohistochemistry (IHC) analyzes of Aldolase B (W148) pAb in paraffin-embedded human lung carcinoma tissue at 1:50, showing cytoplasmic and nuclear staining. Negative control (the right) Using PBS instead of primary antibody, secondary antibody is Goat Anti-Rabbit IgG-biotin followed by avidin-peroxidase.

Note:

For research use only, not for use in diagnostic procedure.