

## AKT (A444) polyclonal antibody

Catalog: BCP00179

Host: Rabbit

Reactivity: Human, Mouse, Rat

### BackGround:

AKT, also known as protein kinase B (PKB), is a 57 kDa serine/threonine protein kinase. There are three mammalian isoforms of Akt: AKT1 (PKB alpha), AKT2 (PKB beta) and AKT3 (PKB gamma) with AKT2 and AKT3 being approximately 82% identical with the AKT1 isoform. Each isoform has a pleckstrin homology (PH) domain, a kinase domain and a carboxy terminal regulatory domain. AKT was originally cloned from the retrovirus AKT8, and is a key regulator of many signal transduction pathways. Its tight control over cell proliferation and cell viability are manifold; overexpression or inappropriate activation of AKT has been seen in many types of cancer.

### Product:

Rabbit IgG, 1mg/ml in PBS with 0.02% sodium azide, 50% glycerol, pH7.2

### Molecular Weight:

~ 60 kDa

### Swiss-Prot:

P31749/P31751/Q9Y243

### Purification&Purity:

The antibody was affinity-purified from rabbit antiserum by affinity-chromatography using epitope-specific immunogen and the purity is > 95% (by SDS-PAGE).

### Applications:

WB 1:500 - 1:1000

IHC 1:50 - 1:100

IP 1:10 - 1:100

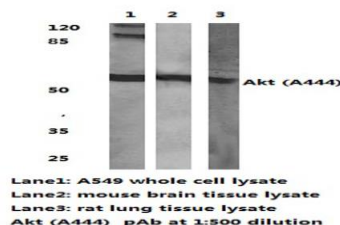
### Storage&Stability:

Store at 4 °C short term. Aliquot and store at -20 °C long term. Avoid freeze-thaw cycles.

### Specificity:

AKT (A444) polyclonal antibody detects endogenous levels of total AKT protein.

### DATA:

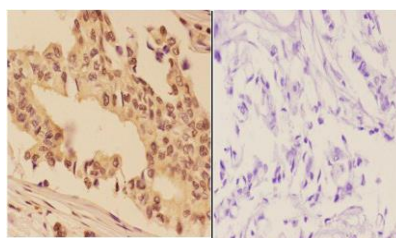


Western blot (WB) analysis of AKT (A444) polyclonal antibody at 1:500 dilution

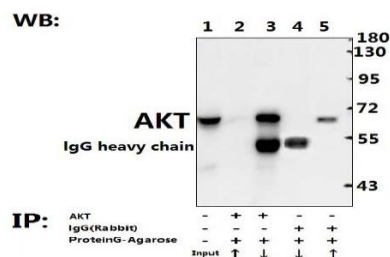
Lane1:MCF-7 whole cell lysate(40ug)

Lane2:The Lung tissue lysate of Rat(40ug)

Lane3:The Lung tissue lysate of Mouse(40ug)



Immunohistochemistry (IHC) analyzes of AKT (A444) pAb in paraffin-embedded human breast carcinoma tissue at 1:50, showing cytoplasm and nucleus staining. Negative control (the right) Using PBS instead of primary antibody, secondary antibody is Goat Anti-Rabbit IgG-biotin followed by avidin-peroxidase.



Immunoprecipitation of the Lung tissue lysate of Mouse using AKT (A444)pAb (Sepharose Bead Conjugate) #BD0047(lane 2 and lane 3) and Nonspecific IgG Control (Sepharose Bead Conjugate)#BD0047 (lane 4 and lane 5). Lane 1 is 30% input. The western blot was probed using AKT (A444)pAb. “↑” (supernatant); “↓” (deposition)

### Note:

For research use only, not for use in diagnostic procedure.