

## AKAP 10 (R27) polyclonal antibody

Catalog: BCP00174

Host: Rabbit

Reactivity: Human

### BackGround:

AKAP 10 (A kinase anchor protein 10), also known as PRKA10 or D-AKAP2 (dual-specific A kinase-anchoring protein 2), is a 662 amino acid mitochondrial membrane protein that belongs to the AKAP family. AKAP 10 is a dual specificity protein that binds to both type I and type II regulatory subunits of PKA and anchors them to the plasma membrane or the mitochondria. When anchored to the mitochondria, PKA can phosphorylate and, thus, inactivate the proapoptotic protein Bad. This suggests that AKAP 10 indirectly regulates Bad-induced apoptosis by mediating the mitochondrial attachment of PKA. Additionally, AKAP 10 may facilitate G-protein coupled signal transduction and could act as an adaptor in the assembly of multiprotein complexes.

### Product:

Rabbit IgG, 1mg/ml in PBS with 0.02% sodium azide, 50% glycerol, pH7.2

### Molecular Weight:

~ 74 kDa

### Swiss-Prot:

O43572

### Purification&Purity:

The antibody was affinity-purified from rabbit antiserum by affinity-chromatography using epitope-specific immunogen and the purity is > 95% (by SDS-PAGE).

### Applications:

WB: 1:500~1:1000

IHC: 1:50~1:200

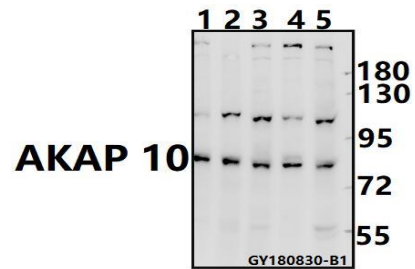
### Storage&Stability:

Store at 4 °C short term. Aliquot and store at -20 °C long term. Avoid freeze-thaw cycles.

### Specificity:

AKAP 10 (R27) polyclonal antibody detects endogenous levels of AKAP 10 protein.

### DATA:



Western blot (WB) analysis of AKAP 10 (R27) pAb at 1:500 dilution

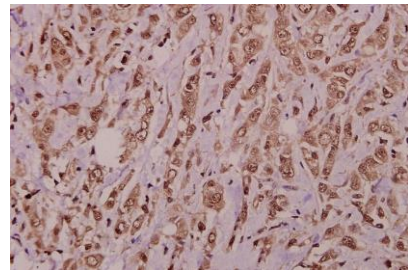
Lane1:PC3 whole cell lysate(40ug)

Lane2:SGC7901 whole cell lysate(40ug)

Lane3:HCT116 whole cell lysate(40ug)

Lane4:Panc1 whole cell lysate(40ug)

Lane5:HEK293T whole cell lysate(40ug)



Immunohistochemistry (IHC) analyzes of AKAP 10 (R27) pAb in paraffin-embedded human colorectal carcinoma tissue at 1:50.

### Note:

For research use only, not for use in diagnostic procedure.