

AChR α 7 polyclonal antibody

Catalog: BCP00137

Host: Rabbit

Reactivity: Human,Mouse,Rat

BackGround:

Chromosome 15 encodes over 700 genes and comprises nearly 3% of the human genome. CHR α 7, a fusion protein comprised of FAM7A and AChR α 7, is encoded by the CHR α 7 gene, which is located on a region of human chromosome 15 that is associated with several neuropsychiatric disorders, such as schizophrenia and bipolar affective disorder. CHR α 7, also known as D-10 or CHR α 7, is a 412 amino acid multi-pass membrane protein that belongs to the nicotinic acetylcholine receptor (nAChR) subfamily of ligand-gated ion channel proteins, a protein superfamily that mediates signal transmission at synapses. CHR α 7 is expressed in the hippocampus. Alternative splicing of the CHR α 7 gene produces two splice variants.

Product:

Rabbit IgG, 1mg/ml in PBS with 0.02% sodium azide, 50% glycerol, pH7.2

Molecular Weight:

~ 56 kDa

Swiss-Prot:

P36544/Q494W8

Purification&Purity:

The antibody was affinity-purified from rabbit antiserum by affinity-chromatography using epitope-specific immunogen and the purity is > 95% (by SDS-PAGE).

Applications:

WB: 1:5000~1:1000

0

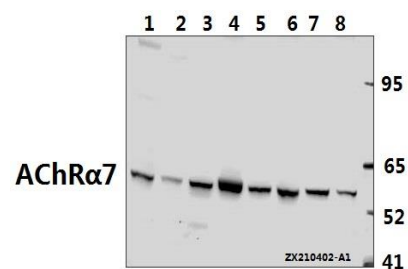
Storage&Stability:

Store at 4 °C short term. Aliquot and store at -20 °C long term. Avoid freeze-thaw cycles.

Specificity:

AChR α 7 polyclonal antibody detects endogenous levels of AChR α 7 protein.

DATA:



Western blot (WB) analysis of AChR α 7 pAb at 1:5000 dilution

Lane1:PC12 whole cell lysate(40ug)

Lane2:AML-12 whole cell lysate(40ug)

Lane3:HCT116 whole cell lysate(40ug)

Lane4:EC9706 whole cell lysate(40ug)

Lane5:SGC7901 whole cell lysate(40ug)

Lane6:A549 whole cell lysate(40ug)

Lane7:HEK293T whole cell lysate(40ug)

Note:

For research use only, not for use in diagnostic procedure.