

ABCG2 (N338) polyclonal antibody

Catalog: BCP00128

Host: Rabbit

Reactivity: Human,Mouse,Rat

BackGround:

ABCG2, is also known as placenta-specific ABC transporter and breast cancer resistance protein (BCRP1). ABCG2 confers resistance for a variety of chemotherapeutic agents, including anthracyclines, mitoxantrone, bisantrene and topotecan. Under normal conditions, ABCG2 may serve a protective function by removing toxins from the cell, and plays an important role in regulating stem cell differentiation. ABCG2 is responsible for the side population (SP) phenotype and is widely expressed in a large variety of stem cells, making it an important stem cell marker. ABCG2 may have N-linked glycosylation and may dimerize in vivo. ABCG2 is abundantly expressed in placenta, liver, intestine and stem cells.

Product:

Rabbit IgG, 1mg/ml in PBS with 0.02% sodium azide, 50% glycerol, pH7.2

Molecular Weight:

~ 72 kDa

Swiss-Prot:

Q9UNQ0

Purification&Purity:

The antibody was affinity-purified from rabbit antiserum by affinity-chromatography using epitope-specific immunogen and the purity is > 95% (by SDS-PAGE).

Applications:

WB: 1:500~1:1000

IHC: 1:50~1:200

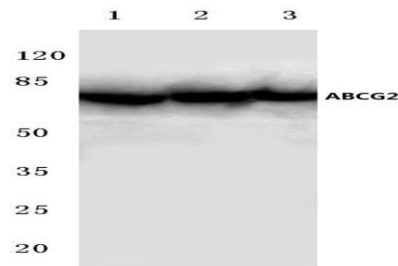
Storage&Stability:

Store at 4 °C short term. Aliquot and store at -20 °C long term. Avoid freeze-thaw cycles.

Specificity:

ABCG2 (N338) polyclonal antibody detects endogenous levels of ATP-binding cassette sub-family G member 2 protein.

DATA:

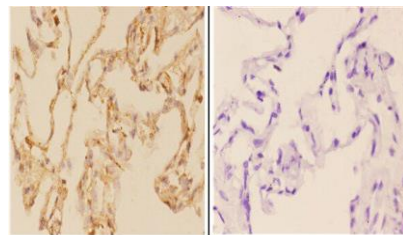


Western blot (WB) analysis of ABCG2 (N338) polyclonal antibody at 1:500 dilution

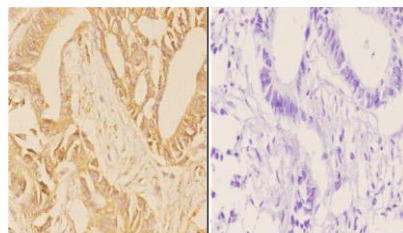
Lane1:Hela cell lysate

Lane2:sp2/0 cell lysate

Lane3:H9C2 cell lysate



Immunohistochemistry (IHC) analyzes of ABCG2 (N338) pAb in paraffin-embedded human lung carcinoma tissue at 1:50, showing cytoplasmic staining. Negative control (the right) Using PBS instead of primary antibody, secondary antibody is Goat Anti-Rabbit IgG-biotin followed by avidin-peroxidase.



Immunohistochemistry (IHC) analyzes of ABCG2 (N338) pAb in paraffin-embedded human rectum carcinoma tissue at 1:50, showing cytoplasmic staining. Negative control (the right) Using PBS instead of primary antibody, secondary antibody is Goat Anti-Rabbit IgG-biotin followed by avidin-peroxidase.

Note:

For research use only, not for use in diagnostic procedure.