

## 4E-BP1 (phospho-T46) polyclonal antibody

Catalog: BCP00124

Host: Rabbit

Reactivity: Human,Mouse,Rat

### BackGround:

The translation of proteins from eukaryotic mRNA is initiated by the multisubunit complex eIF-4F, which associates with the mRNA 5' cap structure. eIF-4E, a component of eIF-4F, is responsible for binding to the 5' cap structure and for the assembly of the eIF-4F complex. The regulatory protein 4E-BP1, also referred to as PHAS-I, inhibits eIF-4E function. Phosphorylation of 4E-BP1 by S6 kinase p70, MAP kinases or PKCs causes the disassociation of 4E-BP1 from eIF-4E, promoting translation. A protein that is functionally related to 4E-BP1, designated 4E-BP2, also associates with eIF-4E.

### Product:

Rabbit IgG, 1mg/ml in PBS with 0.02% sodium azide, 50% glycerol, pH7.2

### Molecular Weight:

~ 15 to 20 kDa

### Swiss-Prot:

Q13541

### Purification&Purity:

The antibody was affinity-purified from rabbit antiserum by affinity-chromatography using epitope-specific immunogen and the purity is > 95% (by SDS-PAGE).

### Applications:

WB: 1:500~1:1000

IHC: 1:50~1:200

IP: 1:50~1:200

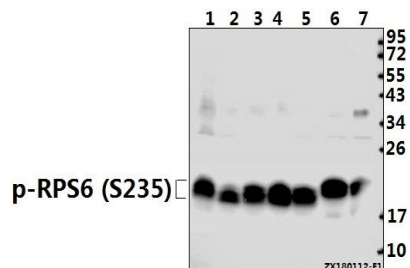
### Storage&Stability:

Store at 4 °C short term. Aliquot and store at -20 °C long term. Avoid freeze-thaw cycles.

### Specificity:

p-4E-BP1 (T46) polyclonal antibody detects endogenous levels of 4E-BP1 protein only when phosphorylated at Thr46.

### DATA:



Western blot (WB) analysis of p-4E-BP1 (T46) pAb at 1:500 dilution

Lane1:PC3 whole cell lysate(40ug)

Lane2:HCT116 whole cell lysate(40ug)

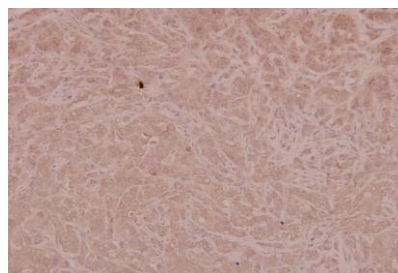
Lane3:SGC7901 whole cell lysate(40ug)

Lane4:EC9706 whole cell lysate(40ug)

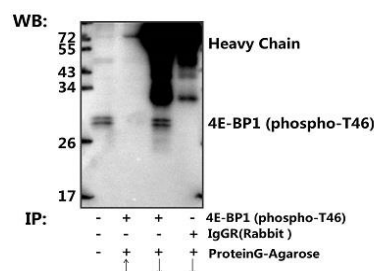
Lane5:Panc1 whole cell lysate(40ug)

Lane6:3T3-L1 whole cell lysate(40ug)

Lane7:PC12 whole cell lysate(20ug)



Immunohistochemistry (IHC) analyzes of p-4E-BP1 (T46) pAb in paraffin-embedded human breast carcinoma tissue at 1:100.



Immunoprecipitation of SGC7901 cell lysate using

4E-BP1 (phospho-T46) polyclonal antibody (Sepharose Bead Conjugate) #BD0048(lane 2 and lane 3) and Nonspecific IgG Control (Sepharose Bead Conjugate) #BD0048 (lane 4). Lane 1 is 30% input. The western blot was probed using 4E-BP1 (phospho-T46). “ ↑ ”

(supernatant) ; “ ↓ (deposition)

### Note:

For research use only, not for use in diagnostic procedure.