

4E-BP1 (G39) polyclonal antibody

Catalog: BCP00123

Host: Rabbit

Reactivity: Human, Mouse, Rat

BackGround:

The translation of proteins from eukaryotic mRNA is initiated by the multisubunit complex eIF-4F, which associates with the mRNA 5' cap structure. eIF-4E, a component of eIF-4F, is responsible for binding to the 5' cap structure and for the assembly of the eIF-4F complex. The regulatory protein 4E-BP1, also referred to as PHAS-I, inhibits eIF-4E function. Phosphorylation of 4E-BP1 by S6 kinase p70, MAP kinases or PKCs causes the disassociation of 4E-BP1 from eIF-4E, promoting translation. A protein that is functionally related to 4E-BP1, designated 4E-BP2, also associates with eIF-4E.

Product:

Rabbit IgG, 1mg/ml in PBS with 0.02% sodium azide, 50% glycerol, pH7.2

Molecular Weight:

~ 15 to 20 kDa

Swiss-Prot:

Q13541

Purification&Purity:

The antibody was affinity-purified from rabbit antiserum by affinity-chromatography using epitope-specific immunogen and the purity is > 95% (by SDS-PAGE).

Applications:

WB: 1:500~1:1000

IHC: 1:50~1:200

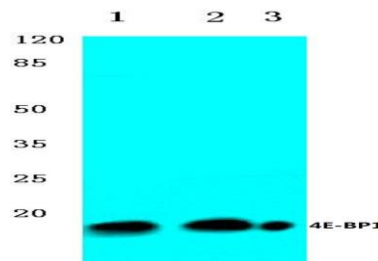
Storage&Stability:

Store at 4 °C short term. Aliquot and store at -20 °C long term. Avoid freeze-thaw cycles.

Specificity:

4E-BP1 (G39) polyclonal antibody detects endogenous levels of 4E-BP1 protein.

DATA:



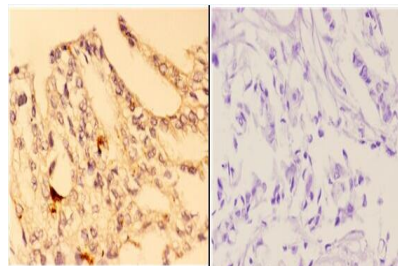
Western blot (WB) analysis of 4E-BP1 (G39) pAb at 1:500 dilution

Lane1:HEK293T whole cell lysate(40ug)

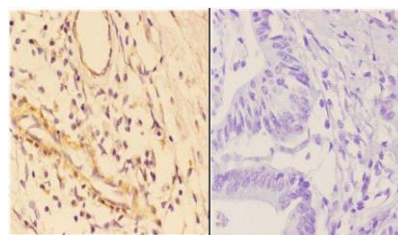
Lane2:PC3 whole cell lysate(40ug)

Lane3:The Ovary tissue lysate of Rat(40ug)

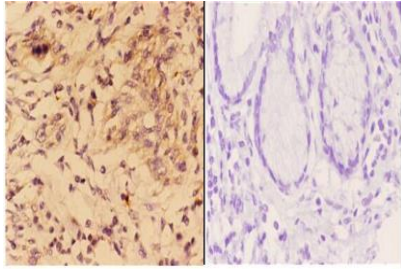
Lane4:The Embryo tissue lysate of Mouse(40ug)



Immunohistochemistry (IHC) analyzes of 4E-BP1 (G39) pAb in paraffin-embedded human breast carcinoma tissue at 1:50, showing cytoplasmic staining. Negative control (the right) Using PBS instead of primary antibody, secondary antibody is Goat Anti-Rabbit IgG-biotin followed by avidin-peroxidase.



Immunohistochemistry (IHC) analyzes of 4E-BP1 (G39) pAb in paraffin-embedded human colon carcinoma tissue at 1:50, showing cytoplasmic staining. Negative control (the right) Using PBS instead of primary antibody, secondary antibody is Goat Anti-Rabbit IgG-biotin followed by avidin-peroxidase.



Immunohistochemistry (IHC) analyzes of 4E-BP1 (G39) pAb in paraffin-embedded human esophageal carcinoma tissue at 1:50, showing cytoplasmic staining. Negative control (the right) Using PBS instead of primary antibody, secondary antibody is Goat Anti-Rabbit IgG-biotin followed by avidin-peroxidase.

Note:

For research use only, not for use in diagnostic procedure.